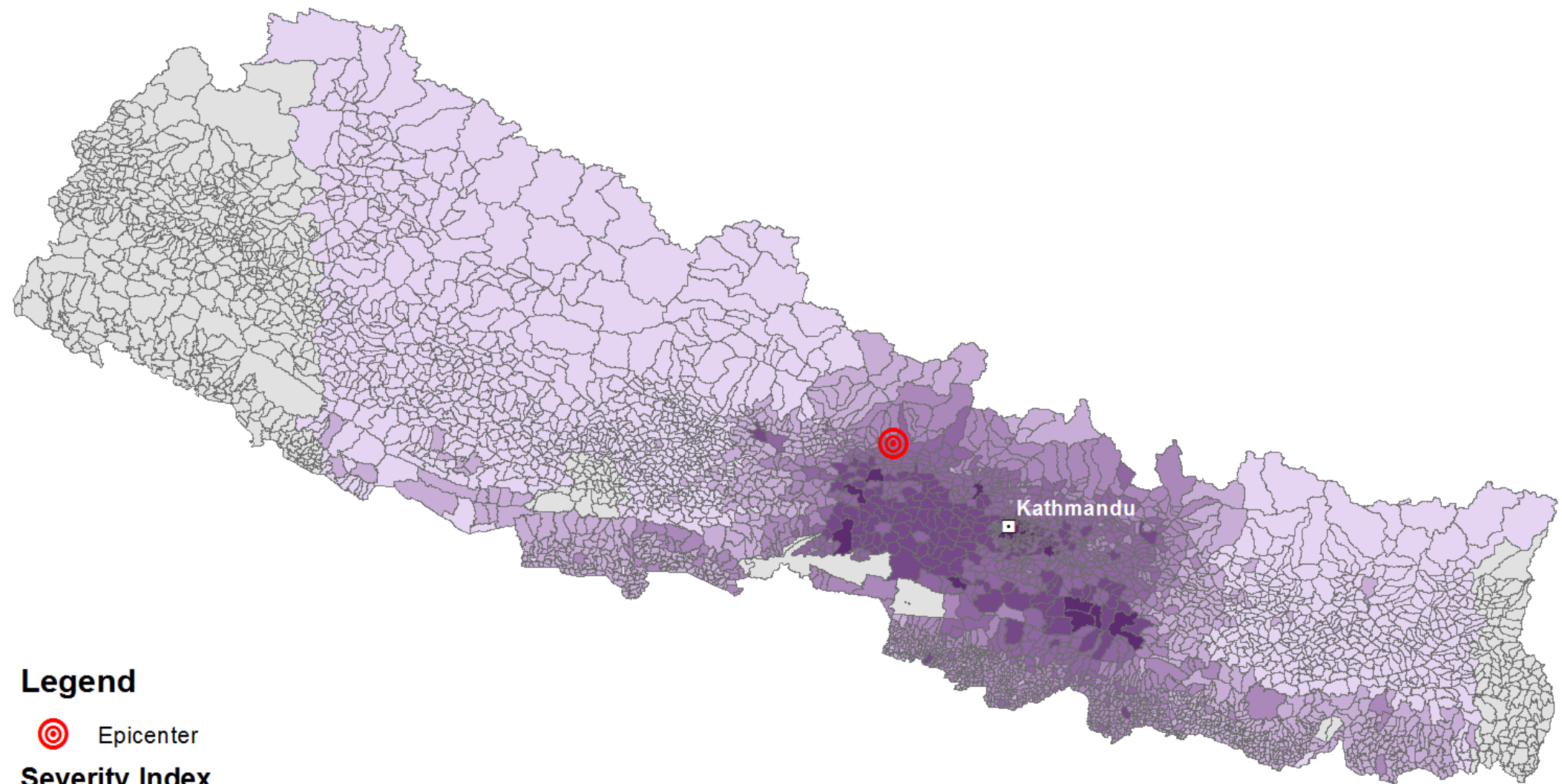


NEPAL EARTHQUAKE SEVERITY INDEX – VERSION 4, 30 April

Severity Index



Legend

⊙ Epicenter

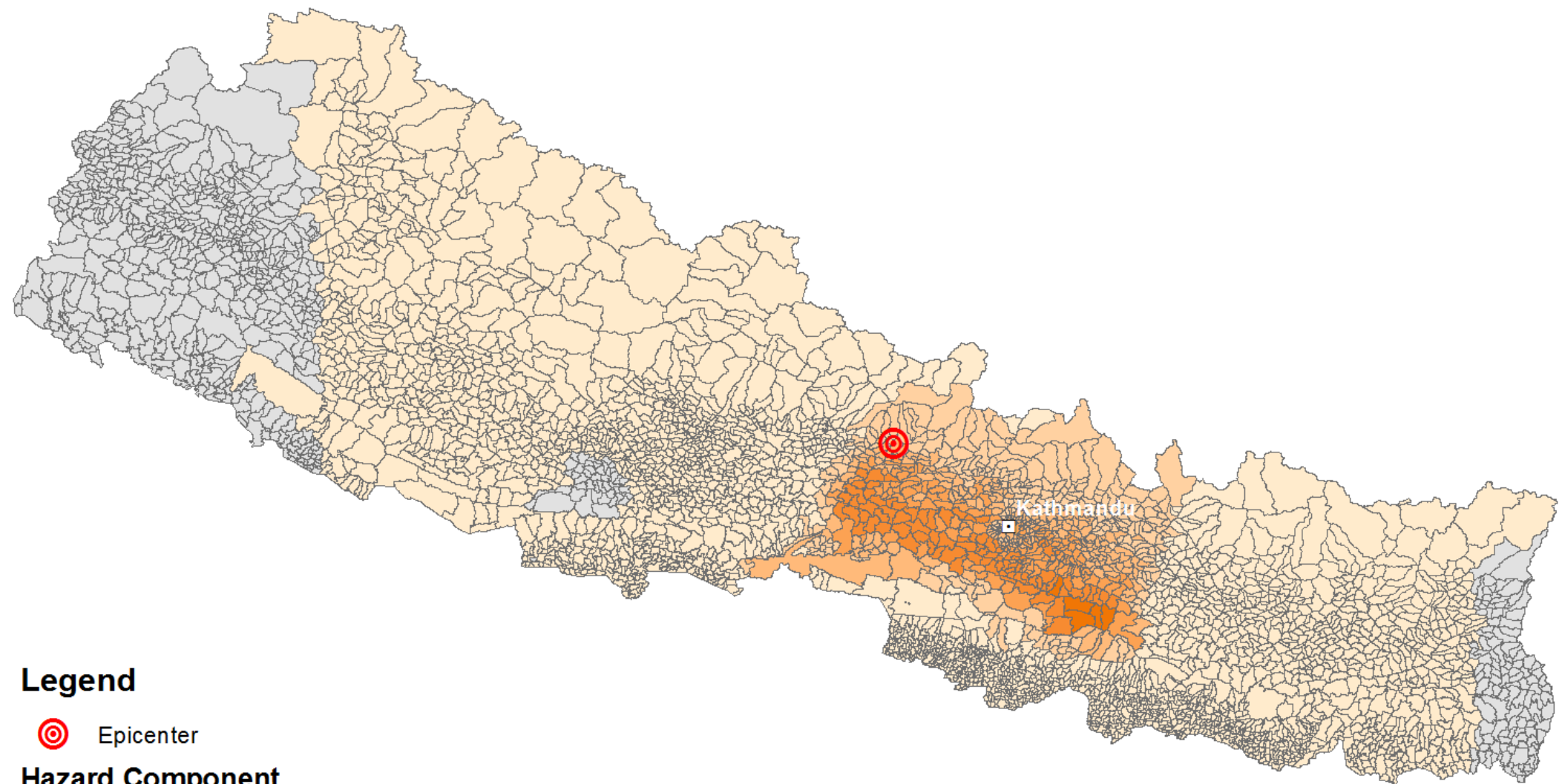
Severity Index

- Lowest
- Low
- Medium-Low
- Medium-High
- High
- Highest

The boundaries and names shown and the designations used on this map do not imply official endorsement or acceptance by the United Nations or European Commission.

NEPAL EARTHQUAKE SEVERITY INDEX – VERSION 4, 30 April

Hazard Dimension



Legend

🎯 Epicenter

Hazard Component

- Lowest
- Low
- Medium-Low
- Medium-High
- High
- Highest

The boundaries and names shown and the designations used on this map do not imply official endorsement or acceptance by the United Nations or European Commission.

NEPAL EARTHQUAKE SEVERITY INDEX – VERSION 4, 30 April

Methodology – see: https://docs.google.com/document/d/1x6IXahlOYYypLhXtsB_X1CA4RVIAPKCMFewRPIvOzY/edit?usp=sharing

Nepal Earthquake Severity Index (Version 4 - 30 April 2015)

The Nepal Earthquake Severity Index is designed to provide an overview of estimated severity of impacts resulting from the earthquake of 25 April 2015. It is not a replacement for first hand damage and needs assessment information, but can support prioritisation during early stages of the response.

It estimates severity based on: 1) the intensity of the earthquake; 2) population; 3) vulnerability of housing and population.

This index will be updated to take account of: validation against first hand reports and improvements to the severity model; improved sources of data (quality, timeliness and scale); changing requirements as the response continues. Version 4 is the latest version of the Index.

This index has been developed by the European Commission Joint Research Centre and OCHA. Contributions and feedback from other partners are welcome.

Methodology

The Index consists of 3 dimensions, which are equally weighted. The Index is calculated by combining the three dimensions using as follows, before being normalised on a scale of 0-10:

$$Severity = Hazard^{1/3} \times Exposure^{1/3} \times Vulnerability^{1/3}$$

NEPAL EARTHQUAKE SEVERITY INDEX				
Dimension	Hazard (1)	Exposure (1)	Vulnerability (1)	
Component	Earthquake Intensity	Total Population (1)	Housing (1) Poverty (1)	
Indicator			Wall type (1)	Roof type (1) Human Poverty Index
Scale	Admin Level 4 (Village)	Admin Level 4 (Village)	Admin Level 3 (District)	Admin Level 3 (District)
Data source	USGS	Nepal Census 2011	Nepal Census 2011	Nepal Human Development Report 2014

Figure 1: Conceptual model of the index with weights shown by scale and in brackets. i.e. Hazard, Exposure and Vulnerability have same weight. Wall type and Roof type have same weight.

Hazard - The maximum intensity (Modified Mercalli Intensity - MMI)¹ of the earthquake based on USGS data.² The maximum intensity value is taken for each area (Admin Level 4). The MMI value is applied exponentially (i.e. 10 ^ MMI) and normalised 0-10..

Exposure - The number of people exposed to the earthquake based on the Total Population in each area (Admin Level 4).³ Population data is normalised on a scale of 0-10.

Vulnerability - The vulnerability of people in each district based on the type of housing and level of poverty. The Housing Vulnerability component is based on two, equally weighted indicators: a) The proportion of households with high risk wall type (mud bonded bricks/stone, cement bonded bricks/stone, unbaked brick); b) The proportion of households with high risk roof type (tile/slate, RCC). The risk types were determined by categorising data on house construction from the Nepal 2011 census against risk levels for housing construction types in earthquakes developed by the Himachal Pradesh State Disaster Management Authority, India, which is considered to be broadly comparable to Nepal in terms of housing type and geography.⁴ The poverty component uses the Human Poverty Index, which is extracted from the Nepal Human Development Report (2014) by UNDP.⁵ The Vulnerability data is currently only applied at Admin Level 3, therefore all villages in each district have the same vulnerability according to the model. Future versions of the model may include Vulnerability data at Admin Level 4.

The methodology for the index is based on INFORM.⁶

Values, categories and data

The Severity Index (and its Dimensions and Components) are provided on a scale of 0-10, where 10 is the highest severity. These values are relative, therefore they have no absolute meaning. They simply estimate where severity is higher or lower across Nepal, without describing the real-world implications of that severity (for example, in terms of actual numbers of killed or injured people, damaged houses etc.)

The Index is divided into 6 categories as follows (number of admin 4 units in each category in brackets): Highest - 2.956 - 10.000 (19); High - 1.723 - 2.955 (168); Medium-high - 1.086 - 1.722 (433); Medium-low - 0.597 - 1.085 (672); Low - 0.240 - 0.596 (800); Lowest - 0.000 - 0.239 (1893). These are also relative - that a village is in the low category DOES NOT IMPLY a lack of needs, only that the impact is estimated by the model to be lower than other areas.

The raw data, all components of the index and all calculations are shown in the associated excel file.

¹ <http://earthquake.usgs.gov/research/shakemap/#intmaps>

² http://earthquake.usgs.gov/earthquakes/eventpage/us20002926#impact_shakemap

³ <https://data.hdx.rwlab.org/dataset/national-population-and-housing-census-2011>

⁴ <http://www.hpsdma.nic.in/ProfileOfState/HousingVulnerability.html>,
<http://www.hpsdma.nic.in/ProfileOfState/HP.pdf>

⁵ <http://data.opennepal.net/content/human-poverty-index-value-districts>
http://www.npc.gov.np/new/uploadedFiles/allFiles/NHDR_Report_2014.pdf

⁶ INFORM is a composite index for measuring the risk of humanitarian crises and disasters. Concepts and methods from the development of INFORM have been applied to produce this severity index.
www.inform-index.org

NEPAL EARTHQUAKE SEVERITY INDEX – Top 300 VDCs in order of decreasing severity (1-50)

VDC NAME	DISTRICT	REGION	Hazard Intensity	Exposure Population	Vulnerability			Severity	Severity category	Population	Population density
					Housing	Poverty	Vulnerability				
KathmanduN.P.	Kathmandu	Central	2.17	10.00	8.86	1.82	5.34	10.00	Highest	975,453	19,724
LalitpurN.P.	Lalitpur	Central	1.72	2.26	8.40	0.82	4.61	5.37	Highest	220,802	14,571
BharatpurN. P.	Chitawan	Central	2.21	1.47	5.38	2.53	3.96	4.81	Highest	143,836	887
MadhyapurThimiN.P.	Bhaktapur	Central	2.45	0.85	8.23	0.89	4.56	4.34	Highest	83,036	7,473
Jorpati	Kathmandu	Central	1.91	0.87	8.86	1.82	5.34	4.24	Highest	84,567	17,549
BhaktapurN.P.	Bhaktapur	Central	1.82	0.84	8.23	0.89	4.56	3.91	Highest	81,748	12,468
PrithbinarayanN.P.	Gorkha	Western	3.48	0.33	6.44	5.21	5.83	3.88	Highest	32,473	539
KamalamiN.P.	Sindhuli	Central	2.54	0.40	5.19	6.55	5.87	3.73	Highest	39,413	189
Kapilakot	Sindhuli	Central	8.02	0.12	5.19	6.55	5.87	3.63	Highest	11,485	107
KirtipurN.P.	Kathmandu	Central	1.35	0.67	8.86	1.82	5.34	3.47	Highest	65,602	4,445
Gonggabau	Kathmandu	Central	1.62	0.56	8.86	1.82	5.34	3.46	Highest	54,410	23,053
Kapan	Kathmandu	Central	1.71	0.50	8.86	1.82	5.34	3.40	Highest	48,463	10,408
PanautiN. P.	Kavrepalanchok	Central	3.30	0.28	6.46	3.31	4.88	3.39	Highest	27,358	862
Mahadevsthan	Sindhuli	Central	10.00	0.07	5.19	6.55	5.87	3.31	Highest	6,967	115
Kalpabrishykhya	Sindhuli	Central	7.10	0.10	5.19	6.55	5.87	3.26	Highest	9,370	73
HetaudaN.P.	Makwanpur	Central	1.04	0.87	4.99	3.64	4.32	3.23	Highest	84,671	1,772
BidurN.P.	Nuwakot	Central	2.26	0.27	5.91	5.85	5.88	3.16	Highest	26,750	799
Aabukhaireni	Tanahu	Western	4.08	0.17	6.43	4.04	5.24	3.14	Highest	16,382	243
RatnanagarN.P.	Chitawan	Central	1.73	0.48	5.38	2.53	3.96	3.04	Highest	46,367	1,302
Dhapasi	Kathmandu	Central	1.74	0.32	8.86	1.82	5.34	2.95	High	31,406	15,410
Gothatar	Kathmandu	Central	2.00	0.27	8.86	1.82	5.34	2.91	High	26,169	5,673
Gaidakot	Nawalparasi	Western	1.82	0.34	5.61	3.51	4.56	2.91	High	33,416	524
BanepaN. P.	Kavrepalanchok	Central	2.28	0.25	6.46	3.31	4.88	2.90	High	24,764	4,456
Dadiguranshe	Sindhuli	Central	9.30	0.05	5.19	6.55	5.87	2.85	High	4,804	58
Manmaiju	Kathmandu	Central	1.20	0.41	8.86	1.82	5.34	2.84	High	40,416	13,248
Nilkantha	Dhading	Central	2.01	0.21	6.82	5.15	5.99	2.78	High	20,182	657
Baireni	Dhading	Central	2.97	0.14	6.82	5.15	5.99	2.76	High	13,369	239
Imadol	Lalitpur	Central	1.87	0.28	8.40	0.82	4.61	2.75	High	27,327	6,794
Gajuri	Dhading	Central	3.50	0.10	6.82	5.15	5.99	2.65	High	10,035	236
Naubise	Dhading	Central	2.34	0.15	6.82	5.15	5.99	2.62	High	14,553	338
Faparbari	Makwanpur	Central	2.76	0.17	4.99	3.64	4.32	2.60	High	16,776	119
Pida	Dhading	Central	2.98	0.11	6.82	5.15	5.99	2.59	High	11,043	207
Chapagaun	Lalitpur	Central	2.58	0.17	8.40	0.82	4.61	2.58	High	16,420	2,257
Jogimara	Dhading	Central	4.18	0.08	6.82	5.15	5.99	2.58	High	7,744	164
DhulikheIN. P.	Kavrepalanchok	Central	2.64	0.15	6.46	3.31	4.88	2.54	High	14,283	1,182
Benighat	Dhading	Central	3.12	0.10	6.82	5.15	5.99	2.52	High	9,717	237
Jutpani	Chitawan	Central	3.19	0.15	5.38	2.53	3.96	2.52	High	14,324	310
Kyaneshwor	Sindhuli	Central	3.27	0.10	5.19	6.55	5.87	2.52	High	9,364	76
Mahankal	Kathmandu	Central	1.84	0.18	8.86	1.82	5.34	2.50	High	17,997	4,383
Balkot	Bhaktapur	Central	2.36	0.16	8.23	0.89	4.56	2.47	High	15,881	5,592
Bhumesthan	Dhading	Central	2.61	0.11	6.82	5.15	5.99	2.46	High	10,786	297
Thakre	Dhading	Central	2.85	0.10	6.82	5.15	5.99	2.46	High	9,838	587
Jeewanpur	Dhading	Central	3.07	0.09	6.82	5.15	5.99	2.43	High	8,789	331
Kumpur	Dhading	Central	2.65	0.10	6.82	5.15	5.99	2.41	High	10,012	226
Devghat	Tanahu	Western	3.84	0.08	6.43	4.04	5.24	2.39	High	7,679	139
Khairahani	Chitawan	Central	1.81	0.22	5.38	2.53	3.96	2.39	High	21,530	1,212
Kautunje	Bhaktapur	Central	1.71	0.20	8.23	0.89	4.56	2.38	High	19,497	4,504
Dhussa	Dhading	Central	3.49	0.07	6.82	5.15	5.99	2.37	High	7,190	134
Gokule	Kavrepalanchok	Central	6.13	0.05	6.46	3.31	4.88	2.34	High	4,837	95
Mahadevsthan	Dhading	Central	3.44	0.07	6.82	5.15	5.99	2.32	High	6,824	106

NEPAL EARTHQUAKE SEVERITY INDEX – Top 300 VDCs in order of decreasing severity (51-100)

VDC NAME	DISTRICT	REGION	Hazard Intensity	Exposure Population	Vulnerability			Severity	Severity category	Population	Population density
					Housing	Poverty	Vulnerability				
Maidi	Dhading	Central	2.51	0.09	6.82	5.15	5.99	2.30	High	9,203	229
IchangNarayan	Kathmandu	Central	1.04	0.25	8.86	1.82	5.34	2.29	High	24,425	2,069
Kalleri	Dhading	Central	2.49	0.09	6.82	5.15	5.99	2.27	High	8,852	223
BhimesworN.P.	Dolakha	Central	0.86	0.23	7.53	5.86	6.70	2.26	High	22,537	346
Panchkhal	Kavrepalanchok	Central	2.16	0.13	6.46	3.31	4.88	2.26	High	12,339	645
Namtar	Makwanpur	Central	3.30	0.09	4.99	3.64	4.32	2.23	High	8,816	95
Bajrabarahi	Makwanpur	Central	3.77	0.08	4.99	3.64	4.32	2.23	High	7,675	428
Kumari	Nuwakot	Central	2.44	0.09	5.91	5.85	5.88	2.22	High	8,672	246
Shaktikhor	Chitawan	Central	3.32	0.10	5.38	2.53	3.96	2.22	High	9,418	179
Mahadevathan	Kathmandu	Central	1.49	0.16	8.86	1.82	5.34	2.22	High	15,514	2,210
Lele	Lalitpur	Central	3.18	0.09	8.40	0.82	4.61	2.22	High	8,411	349
Darechok	Chitawan	Central	3.21	0.10	5.38	2.53	3.96	2.21	High	9,607	245
Chainpur	Chitawan	Central	1.81	0.17	5.38	2.53	3.96	2.20	High	16,786	568
Manakamana	Gorkha	Western	3.32	0.06	6.44	5.21	5.83	2.20	High	6,203	199
Daman	Makwanpur	Central	3.29	0.09	4.99	3.64	4.32	2.20	High	8,439	181
Bhandara	Chitawan	Central	1.85	0.17	5.38	2.53	3.96	2.19	High	16,121	731
Budanilkantha	Kathmandu	Central	1.42	0.16	8.86	1.82	5.34	2.18	High	15,421	1,103
Bunkot	Gorkha	Western	3.21	0.06	6.44	5.21	5.83	2.18	High	6,260	222
Mahendrajhayadi	Sindhuli	Central	3.30	0.06	5.19	6.55	5.87	2.17	High	6,015	73
Sainbu	Lalitpur	Central	1.27	0.20	8.40	0.82	4.61	2.17	High	19,721	4,788
Madanpur	Nuwakot	Central	2.21	0.09	5.91	5.85	5.88	2.17	High	8,862	287
Ugratarajanagal	Kavrepalanchok	Central	3.38	0.07	6.46	3.31	4.88	2.16	High	6,953	1,207
Sitapaila	Kathmandu	Central	1.19	0.18	8.86	1.82	5.34	2.16	High	17,909	5,104
Piple	Chitawan	Central	1.84	0.16	5.38	2.53	3.96	2.15	High	15,455	364
ChhatreDyaurali	Dhading	Central	2.44	0.08	6.82	5.15	5.99	2.15	High	7,687	266
Manahari	Makwanpur	Central	1.30	0.20	4.99	3.64	4.32	2.15	High	19,984	78
Goganpani	Dhading	Central	3.29	0.06	6.82	5.15	5.99	2.13	High	5,563	167
HariharpurGadhi	Sindhuli	Central	3.94	0.05	5.19	6.55	5.87	2.13	High	4,744	73
Kankada	Makwanpur	Central	3.22	0.08	4.99	3.64	4.32	2.13	High	7,840	102
Birendranagar	Chitawan	Central	1.81	0.15	5.38	2.53	3.96	2.12	High	14,934	427
Kewalpur	Dhading	Central	3.57	0.05	6.82	5.15	5.99	2.11	High	5,010	301
Thankot	Kathmandu	Central	1.66	0.12	8.86	1.82	5.34	2.11	High	12,047	1,960
Mulpani	Kathmandu	Central	1.69	0.12	8.86	1.82	5.34	2.11	High	11,742	3,039
Mangalpur	Chitawan	Central	1.40	0.20	5.38	2.53	3.96	2.10	High	19,066	749
Dadhikot	Bhaktapur	Central	1.97	0.12	8.23	0.89	4.56	2.10	High	11,629	1,790
NasikasthanSangha	Kavrepalanchok	Central	3.48	0.06	6.46	3.31	4.88	2.10	High	6,121	667
Salyantar	Dhading	Central	2.20	0.08	6.82	5.15	5.99	2.09	High	7,892	439
Kiranchok	Dhading	Central	2.88	0.06	6.82	5.15	5.99	2.09	High	6,006	138
Ghyalchok	Gorkha	Western	2.97	0.06	6.44	5.21	5.83	2.09	High	5,952	174
Pokhara N. P.	Kaski	Western	0.11	2.62	7.44	0.00	3.72	2.07	High	255,465	4,626
Godawari	Lalitpur	Central	2.86	0.08	8.40	0.82	4.61	2.07	High	7,558	459
ChandiBhanjyang	Chitawan	Central	5.00	0.05	5.38	2.53	3.96	2.06	High	4,978	102
Dahakhani	Chitawan	Central	5.18	0.05	5.38	2.53	3.96	2.06	High	4,803	120
Parwanipur	Sarlahi	Central	1.82	0.09	4.21	8.35	6.28	2.05	High	8,500	94
Deurali	Gorkha	Western	3.03	0.06	6.44	5.21	5.83	2.05	High	5,514	177
Tikathali	Lalitpur	Central	2.07	0.10	8.40	0.82	4.61	2.04	High	10,136	3,366
Kushadevi	Kavrepalanchok	Central	2.76	0.07	6.46	3.31	4.88	2.04	High	7,114	307
Pithuwa	Chitawan	Central	1.92	0.13	5.38	2.53	3.96	2.04	High	12,579	912
Palung	Makwanpur	Central	3.93	0.06	4.99	3.64	4.32	2.03	High	5,603	275
KhayarMara	Mahottari	Central	1.68	0.09	4.33	8.62	6.48	2.03	High	8,719	94

NEPAL EARTHQUAKE SEVERITY INDEX – Top 300 VDCs in order of decreasing severity (101-151)

VDC NAME	DISTRICT	REGION	Hazard Intensity	Exposure Population	Vulnerability			Severity	Severity category	Population	Population density
					Housing	Poverty	Vulnerability				
Seuchatar	Kathmandu	Central	1.33	0.14	8.86	1.82	5.34	2.03	High	13,412	4,893
Sangachok	Sindhupalchok	Central	1.47	0.10	6.85	6.57	6.71	2.03	High	9,577	314
BanakhuChor	Kavrepalanchok	Central	4.24	0.05	6.46	3.31	4.88	2.03	High	4,554	124
Salang	Dhading	Central	2.77	0.06	6.82	5.15	5.99	2.02	High	5,650	163
Sudal	Bhaktapur	Central	2.82	0.07	8.23	0.89	4.56	2.02	High	7,254	991
Bhirkot	Gorkha	Western	3.02	0.05	6.44	5.21	5.83	2.02	High	5,261	183
Muralibhanjyang	Dhading	Central	2.12	0.07	6.82	5.15	5.99	2.01	High	7,253	321
Bhaise	Makwanpur	Central	3.18	0.07	4.99	3.64	4.32	2.01	High	6,717	107
Duipipal	Nuwakot	Central	1.99	0.08	5.91	5.85	5.88	2.01	High	7,790	236
Pipalmadi	Sindhuli	Central	2.04	0.08	5.19	6.55	5.87	2.00	High	7,604	104
Daanchhi	Kathmandu	Central	1.51	0.12	8.86	1.82	5.34	2.00	High	11,246	2,252
ShreepurChhatiwan	Makwanpur	Central	1.01	0.21	4.99	3.64	4.32	2.00	High	20,747	128
Chhaling	Bhaktapur	Central	2.41	0.08	8.23	0.89	4.56	1.99	High	8,129	846
Bandipur	Tanahu	Western	1.36	0.13	6.43	4.04	5.24	1.99	High	12,450	285
KhadkaBhadrakali	Kathmandu	Central	1.54	0.11	8.86	1.82	5.34	1.98	High	10,761	4,501
Agara	Makwanpur	Central	2.61	0.08	4.99	3.64	4.32	1.98	High	7,836	191
Nalang	Dhading	Central	1.82	0.08	6.82	5.15	5.99	1.98	High	8,067	295
Kaule	Chitawan	Central	3.95	0.06	5.38	2.53	3.96	1.98	High	5,614	144
Kabilas	Chitawan	Central	3.79	0.06	5.38	2.53	3.96	1.98	High	5,815	92
Khalte	Dhading	Central	2.03	0.07	6.82	5.15	5.99	1.97	High	7,177	216
Dhapakhel	Lalitpur	Central	1.47	0.13	8.40	0.82	4.61	1.97	High	12,678	3,453
Dandagaun	Kavrepalanchok	Central	5.55	0.03	6.46	3.31	4.88	1.95	High	3,104	649
Santeswori(Rampur)	Sindhuli	Central	5.25	0.03	5.19	6.55	5.87	1.95	High	2,725	86
BirgunjN. P.	Parsa	Central	0.11	1.39	4.85	6.07	5.46	1.95	High	135,904	6,421
Sunaulabazar	Dhading	Central	2.11	0.07	6.82	5.15	5.99	1.95	High	6,622	249
Chainpur	Dhading	Central	2.13	0.07	6.82	5.15	5.99	1.93	High	6,349	264
Chhoprak	Gorkha	Western	2.28	0.06	6.44	5.21	5.83	1.91	High	5,893	257
Nala(Ugrachandi)	Kavrepalanchok	Central	2.23	0.07	6.46	3.31	4.88	1.91	High	7,198	682
Jyamrung	Dhading	Central	1.86	0.07	6.82	5.15	5.99	1.90	High	6,998	197
Raksirang	Makwanpur	Central	2.75	0.07	4.99	3.64	4.32	1.90	High	6,572	135
Bhimfedi	Makwanpur	Central	3.31	0.06	4.99	3.64	4.32	1.90	High	5,440	123
Chitlang	Makwanpur	Central	3.58	0.05	4.99	3.64	4.32	1.90	High	5,029	154
Duwakot	Bhaktapur	Central	1.62	0.11	8.23	0.89	4.56	1.90	High	10,461	1,659
Lamatar	Lalitpur	Central	2.03	0.08	8.40	0.82	4.61	1.89	High	8,188	740
JanakpurN.P.	Dhanusa	Central	0.13	1.00	4.78	7.70	6.24	1.89	High	97,776	3,971
Khoplang	Gorkha	Western	2.52	0.05	6.44	5.21	5.83	1.89	High	5,193	209
Netrakali	Sindhuli	Central	3.80	0.03	5.19	6.55	5.87	1.89	High	3,400	119
DeuumiBaluwa	Kavrepalanchok	Central	2.16	0.07	6.46	3.31	4.88	1.88	High	7,138	401
Gogane	Makwanpur	Central	3.25	0.05	4.99	3.64	4.32	1.88	High	5,345	89
Harisiddhi	Lalitpur	Central	1.49	0.11	8.40	0.82	4.61	1.87	High	10,736	3,463
JhangajholiRalmata	Sindhuli	Central	2.29	0.05	5.19	6.55	5.87	1.85	High	5,337	150
Hariyon	Sarlahi	Central	0.56	0.21	4.21	8.35	6.28	1.85	High	20,350	949
Taklung	Gorkha	Western	2.44	0.05	6.44	5.21	5.83	1.85	High	5,028	196
Palumtar	Gorkha	Western	1.49	0.08	6.44	5.21	5.83	1.84	High	8,143	386
Lothar	Chitawan	Central	3.53	0.05	5.38	2.53	3.96	1.84	High	5,047	81
Borlang	Gorkha	Western	2.40	0.05	6.44	5.21	5.83	1.84	High	5,044	175
Shikharpur	Makwanpur	Central	2.76	0.06	4.99	3.64	4.32	1.84	High	5,896	147
Bageswari	Bhaktapur	Central	2.85	0.06	8.23	0.89	4.56	1.84	High	5,385	563
Sipadol	Bhaktapur	Central	1.55	0.10	8.23	0.89	4.56	1.84	High	9,876	1,218
MahendraJyoti	Kavrepalanchok	Central	4.20	0.03	6.46	3.31	4.88	1.84	High	3,409	620

NEPAL EARTHQUAKE SEVERITY INDEX – Top 300 VDCs in order of decreasing severity (151-200)

VDC NAME	DISTRICT	REGION	Hazard Intensity	Exposure Population	Vulnerability			Severity	Severity category	Population	Population density
					Housing	Poverty	Vulnerability				
Chhaimale	Kathmandu	Central	3.09	0.04	8.86	1.82	5.34	1.83	High	4,216	434
Belkot	Nuwakot	Central	1.54	0.08	5.91	5.85	5.88	1.83	High	7,660	262
Daxinkali	Kathmandu	Central	2.73	0.05	8.86	1.82	5.34	1.83	High	4,755	1,033
Gokarneswor	Kathmandu	Central	1.72	0.08	8.86	1.82	5.34	1.83	High	7,508	1,600
Tinthana	Kathmandu	Central	1.32	0.10	8.86	1.82	5.34	1.83	High	9,726	7,547
Falametar	Kavrepalanchok	Central	3.32	0.04	6.46	3.31	4.88	1.82	High	4,234	84
Lubhu	Lalitpur	Central	1.43	0.11	8.40	0.82	4.61	1.82	High	10,374	1,620
Tathali	Bhaktapur	Central	2.60	0.06	8.23	0.89	4.56	1.81	High	5,698	655
Sangkosh	Dhading	Central	2.04	0.06	6.82	5.15	5.99	1.81	High	5,521	202
Thecho	Lalitpur	Central	1.44	0.10	8.40	0.82	4.61	1.81	High	10,086	3,099
ChapaliBhadrakali	Kathmandu	Central	1.14	0.11	8.86	1.82	5.34	1.80	High	10,827	1,727
TistungDeurali	Makwanpur	Central	2.17	0.07	4.99	3.64	4.32	1.80	High	7,041	216
Chandranigahapur	Rautahat	Central	0.37	0.27	4.38	9.14	6.76	1.80	High	26,163	208
Kalikatar	Makwanpur	Central	3.22	0.05	4.99	3.64	4.32	1.80	High	4,723	138
PuranoJhangajholi	Sindhuli	Central	2.37	0.05	5.19	6.55	5.87	1.80	High	4,707	146
ShankhupatiChour	Kavrepalanchok	Central	3.97	0.03	6.46	3.31	4.88	1.80	High	3,372	503
Bhanu	Tanahu	Western	0.94	0.14	6.43	4.04	5.24	1.79	High	13,175	295
Ranichuri	Sindhuli	Central	1.24	0.09	5.19	6.55	5.87	1.79	High	8,881	109
Mahadevsthan	Kavrepalanchok	Central	1.61	0.08	6.46	3.31	4.88	1.78	High	8,166	369
Amale	Sindhuli	Central	4.82	0.02	5.19	6.55	5.87	1.78	High	2,261	55
Tasarpu	Dhading	Central	2.06	0.05	6.82	5.15	5.99	1.78	High	5,151	316
Anekot	Kavrepalanchok	Central	1.84	0.07	6.46	3.31	4.88	1.78	High	7,100	288
Bhadrakali	Sindhuli	Central	2.46	0.05	5.19	6.55	5.87	1.78	High	4,415	87
SarikhhetPalase	Makwanpur	Central	1.75	0.09	4.99	3.64	4.32	1.78	High	8,391	143
Korak	Chitawan	Central	2.43	0.07	5.38	2.53	3.96	1.77	High	6,550	129
Goldhunga	Kathmandu	Central	0.73	0.17	8.86	1.82	5.34	1.77	High	16,174	3,142
Chyngli	Gorkha	Western	1.68	0.06	6.44	5.21	5.83	1.76	High	6,286	199
Bhumlichok	Gorkha	Western	2.97	0.04	6.44	5.21	5.83	1.76	High	3,545	165
Kathar	Chitawan	Central	1.60	0.10	5.38	2.53	3.96	1.76	High	9,696	571
BhartaPundyadevi	Makwanpur	Central	3.38	0.04	4.99	3.64	4.32	1.75	High	4,169	147
KusesworDumja	Sindhuli	Central	2.08	0.05	5.19	6.55	5.87	1.75	High	4,973	141
Makwanpurgadhi	Makwanpur	Central	1.09	0.13	4.99	3.64	4.32	1.75	High	12,806	228
Dandakharka	Makwanpur	Central	3.46	0.04	4.99	3.64	4.32	1.74	High	4,021	112
Basamadi	Makwanpur	Central	0.81	0.18	4.99	3.64	4.32	1.74	High	17,130	232
Lakhanpur	Ramechhap	Central	1.46	0.06	7.16	6.06	6.61	1.74	High	6,209	234
Fakhel	Makwanpur	Central	3.04	0.05	4.99	3.64	4.32	1.74	High	4,524	130
Bastipur	Sindhuli	Central	3.25	0.03	5.19	6.55	5.87	1.72	High	3,029	101
Dhunkharka	Kavrepalanchok	Central	2.41	0.05	6.46	3.31	4.88	1.72	Medium-High	4,916	169
Fujel	Gorkha	Western	2.11	0.05	6.44	5.21	5.83	1.72	Medium-High	4,694	325
Katunje	Dhading	Central	1.63	0.06	6.82	5.15	5.99	1.72	Medium-High	5,906	209
KavreNitya Chandeswor	Kavrepalanchok	Central	2.39	0.05	6.46	3.31	4.88	1.72	Medium-High	4,927	522
Markhu	Makwanpur	Central	4.29	0.03	4.99	3.64	4.32	1.71	Medium-High	3,071	193
Byas N. P.	Tanahu	Western	0.25	0.44	6.43	4.04	5.24	1.71	Medium-High	42,899	715
Okharpauwa	Nuwakot	Central	1.21	0.08	5.91	5.85	5.88	1.71	Medium-High	7,901	398
Thaiba	Lalitpur	Central	1.47	0.08	8.40	0.82	4.61	1.71	Medium-High	8,261	3,528
Bhimkhori	Kavrepalanchok	Central	2.07	0.06	6.46	3.31	4.88	1.70	Medium-High	5,524	160
Sunakothi	Lalitpur	Central	1.20	0.10	8.40	0.82	4.61	1.70	Medium-High	10,092	3,344
Deurali	Tanahu	Western	4.24	0.03	6.43	4.04	5.24	1.70	Medium-High	2,499	72
Machchhegaun	Kavrepalanchok	Central	1.86	0.06	6.46	3.31	4.88	1.70	Medium-High	6,110	228
Ghairung	Gorkha	Western	2.37	0.04	6.44	5.21	5.83	1.70	Medium-High	3,990	192

NEPAL EARTHQUAKE SEVERITY INDEX – Top 300 VDCs in order of decreasing severity (201-250)

VDC NAME	DISTRICT	REGION	Hazard Intensity	Exposure Population	Vulnerability			Severity	Severity category	Population	Population density
					Housing	Poverty	Vulnerability				
Methinkot	Kavrepalanchok	Central	2.39	0.05	6.46	3.31	4.88	1.70	Medium-High	4,721	221
Jiling	Nuwakot	Central	1.49	0.06	5.91	5.85	5.88	1.69	Medium-High	6,286	291
Taruka	Nuwakot	Central	1.77	0.05	5.91	5.85	5.88	1.69	Medium-High	5,233	308
Bachhyauli	Chitawan	Central	1.25	0.11	5.38	2.53	3.96	1.69	Medium-High	10,905	566
KhadagBhanjyang	Nuwakot	Central	1.49	0.06	5.91	5.85	5.88	1.68	Medium-High	6,166	335
Jhaukhel	Bhaktapur	Central	1.53	0.08	8.23	0.89	4.56	1.68	Medium-High	7,721	1,478
Nankhel	Bhaktapur	Central	2.15	0.06	8.23	0.89	4.56	1.68	Medium-High	5,509	809
Bakrang	Gorkha	Western	3.06	0.03	6.44	5.21	5.83	1.68	Medium-High	3,019	112
Thansing	Nuwakot	Central	1.49	0.06	5.91	5.85	5.88	1.68	Medium-High	6,126	303
Budhakhani	Kavrepalanchok	Central	2.76	0.04	6.46	3.31	4.88	1.67	Medium-High	3,941	99
Khairang	Makwanpur	Central	3.60	0.03	4.99	3.64	4.32	1.67	Medium-High	3,389	80
Lalbandi	Sarlahi	Central	0.57	0.15	4.21	8.35	6.28	1.67	Medium-High	14,583	1,058
Rayalebhir	Kavrepalanchok	Central	2.50	0.04	6.46	3.31	4.88	1.67	Medium-High	4,302	174
Nibuwatar	Makwanpur	Central	2.85	0.04	4.99	3.64	4.32	1.67	Medium-High	4,259	145
Khari	Dhading	Central	2.00	0.04	6.82	5.15	5.99	1.67	Medium-High	4,381	145
TukuchaNala	Kavrepalanchok	Central	2.18	0.05	6.46	3.31	4.88	1.67	Medium-High	4,907	398
NaikapNayaBhanjyang	Kathmandu	Central	1.23	0.08	8.86	1.82	5.34	1.66	Medium-High	7,944	6,346
Betini	Makwanpur	Central	3.59	0.03	4.99	3.64	4.32	1.66	Medium-High	3,351	52
Dhuwakot	Gorkha	Western	2.08	0.04	6.44	5.21	5.83	1.66	Medium-High	4,259	223
Nayapati	Kathmandu	Central	1.33	0.07	8.86	1.82	5.34	1.66	Medium-High	7,257	1,082
HokseBazar	Kavrepalanchok	Central	2.29	0.05	6.46	3.31	4.88	1.66	Medium-High	4,613	371
Ishworpur	Sarlahi	Central	0.39	0.22	4.21	8.35	6.28	1.66	Medium-High	21,034	942
ThuloSirubari	Sindhupalchok	Central	1.28	0.06	6.85	6.57	6.71	1.66	Medium-High	5,987	268
Bethan	Ramechhap	Central	1.67	0.05	7.16	6.06	6.61	1.65	Medium-High	4,634	257
Pakarbass	Ramechhap	Central	1.21	0.07	7.16	6.06	6.61	1.65	Medium-High	6,392	205
Gitanagar	Chitawan	Central	0.92	0.14	5.38	2.53	3.96	1.65	Medium-High	13,929	838
SimalchourSyampati	Kavrepalanchok	Central	2.71	0.04	6.46	3.31	4.88	1.65	Medium-High	3,819	314
Kakani	Nuwakot	Central	1.17	0.08	5.91	5.85	5.88	1.64	Medium-High	7,320	243
Dhola	Dhading	Central	2.08	0.04	6.82	5.15	5.99	1.64	Medium-High	4,033	219
Satungal	Kathmandu	Central	0.90	0.11	8.86	1.82	5.34	1.64	Medium-High	10,452	4,480
Charghare	Nuwakot	Central	1.57	0.06	5.91	5.85	5.88	1.64	Medium-High	5,419	295
MathurapatiFulbari	Kavrepalanchok	Central	2.27	0.05	6.46	3.31	4.88	1.63	Medium-High	4,458	298
Thingan	Makwanpur	Central	2.67	0.04	4.99	3.64	4.32	1.63	Medium-High	4,270	64
Ghartichhap	Kavrepalanchok	Central	3.83	0.03	6.46	3.31	4.88	1.63	Medium-High	2,612	103
Siddi	Chitawan	Central	3.22	0.04	5.38	2.53	3.96	1.63	Medium-High	3,827	76
Talkududechour	Kathmandu	Central	3.19	0.03	8.86	1.82	5.34	1.63	Medium-High	2,858	241
Tanglichok	Gorkha	Western	2.48	0.03	6.44	5.21	5.83	1.63	Medium-High	3,369	169
Khanalthok	Kavrepalanchok	Central	2.11	0.05	6.46	3.31	4.88	1.63	Medium-High	4,707	367
Maisthan	Mahottari	Central	0.75	0.10	4.33	8.62	6.48	1.62	Medium-High	10,022	119
Choutara	Sindhupalchok	Central	1.21	0.06	6.85	6.57	6.71	1.62	Medium-High	5,952	690
Badegau	Sindhupalchok	Central	1.33	0.05	6.85	6.57	6.71	1.62	Medium-High	5,353	267
Mukundapur	Nawalparasi	Western	0.80	0.13	5.61	3.51	4.56	1.62	Medium-High	13,027	473
NarayanKhola	Sarlahi	Central	1.76	0.04	4.21	8.35	6.28	1.62	Medium-High	4,311	86
Lisankhu	Sindhupalchok	Central	1.88	0.04	6.85	6.57	6.71	1.62	Medium-High	3,774	113
Matatirtha	Kathmandu	Central	1.49	0.06	8.86	1.82	5.34	1.62	Medium-High	5,982	965
Tandrang	Gorkha	Western	1.93	0.04	6.44	5.21	5.83	1.61	Medium-High	4,221	262
Masel	Gorkha	Western	2.12	0.04	6.44	5.21	5.83	1.61	Medium-High	3,827	257
AaruChanuante	Gorkha	Western	1.87	0.04	6.44	5.21	5.83	1.61	Medium-High	4,327	540
Milche	Kavrepalanchok	Central	3.58	0.03	6.46	3.31	4.88	1.61	Medium-High	2,693	120
Kalinjor	Sarlahi	Central	1.39	0.06	4.21	8.35	6.28	1.61	Medium-High	5,388	132

NEPAL EARTHQUAKE SEVERITY INDEX – Top 300 VDCs in order of decreasing severity (251-300)

VDC NAME	DISTRICT	REGION	Hazard Intensity	Exposure Population	Vulnerability			Severity	Severity category	Population	Population density
					Housing	Poverty	Vulnerability				
KholegaunKhanigau	Nuwakot	Central	1.50	0.05	5.91	5.85	5.88	1.61	Medium-High	5,330	345
Saldhara	Kavrepalanchok	Central	3.63	0.03	6.46	3.31	4.88	1.61	Medium-High	2,646	134
Dhuwakot	Dhading	Central	1.64	0.05	6.82	5.15	5.99	1.61	Medium-High	4,762	198
Chhampi	Lalitpur	Central	2.13	0.05	8.40	0.82	4.61	1.61	Medium-High	4,753	860
GunsiBhadaure	Ramechhap	Central	1.51	0.05	7.16	6.06	6.61	1.61	Medium-High	4,702	215
Tamajor	Sindhuli	Central	3.39	0.02	5.19	6.55	5.87	1.60	Medium-High	2,346	66
Samari	Nuwakot	Central	1.49	0.05	5.91	5.85	5.88	1.60	Medium-High	5,304	182
Badikhel	Lalitpur	Central	2.81	0.04	8.40	0.82	4.61	1.60	Medium-High	3,576	612
ChalalGaneshsthan	Kavrepalanchok	Central	2.38	0.04	6.46	3.31	4.88	1.60	Medium-High	3,973	315
Chaughada	Nuwakot	Central	1.43	0.06	5.91	5.85	5.88	1.60	Medium-High	5,480	425
Patalekhhet	Kavrepalanchok	Central	2.35	0.04	6.46	3.31	4.88	1.60	Medium-High	4,009	396
Chitapol	Bhaktapur	Central	1.79	0.06	8.23	0.89	4.56	1.60	Medium-High	5,619	1,107
SisneriMahadevsthan	Makwanpur	Central	3.27	0.03	4.99	3.64	4.32	1.59	Medium-High	3,245	128
Sidhdipur	Lalitpur	Central	1.61	0.06	8.40	0.82	4.61	1.59	Medium-High	6,147	3,059
Dhungrekhola	Sarlahi	Central	0.54	0.14	4.21	8.35	6.28	1.59	Medium-High	13,500	416
Fatakshila	Sindhupalchok	Central	1.58	0.04	6.85	6.57	6.71	1.59	Medium-High	4,286	361
Aarupokhari	Gorkha	Western	1.70	0.05	6.44	5.21	5.83	1.59	Medium-High	4,564	195
Gerkhu	Nuwakot	Central	1.20	0.07	5.91	5.85	5.88	1.59	Medium-High	6,382	282
Salyankot	Dhading	Central	1.53	0.05	6.82	5.15	5.99	1.59	Medium-High	4,920	278
Rakathum	Ramechhap	Central	1.98	0.04	7.16	6.06	6.61	1.58	Medium-High	3,434	167
Kalati Bhumidanda	Kavrepalanchok	Central	2.53	0.04	6.46	3.31	4.88	1.58	Medium-High	3,638	140
Raigaun	Makwanpur	Central	1.00	0.11	4.99	3.64	4.32	1.58	Medium-High	10,368	97
SikharAmbote	Kavrepalanchok	Central	2.47	0.04	6.46	3.31	4.88	1.58	Medium-High	3,711	138
JyandiMandan	Kavrepalanchok	Central	1.88	0.05	6.46	3.31	4.88	1.58	Medium-High	4,878	300
Aginchok	Dhading	Central	2.07	0.04	6.82	5.15	5.99	1.58	Medium-High	3,580	218
KanpurKalapani	Kavrepalanchok	Central	2.07	0.04	6.46	3.31	4.88	1.58	Medium-High	4,376	233
Saurpani	Gorkha	Western	1.27	0.06	6.44	5.21	5.83	1.57	Medium-High	5,958	171
Suntol	Kathmandu	Central	1.71	0.05	8.86	1.82	5.34	1.57	Medium-High	4,819	395
Taple	Gorkha	Western	1.68	0.05	6.44	5.21	5.83	1.57	Medium-High	4,496	277
AaruArbang	Gorkha	Western	1.67	0.05	6.44	5.21	5.83	1.57	Medium-High	4,496	236
Ramkot	Kathmandu	Central	0.93	0.09	8.86	1.82	5.34	1.57	Medium-High	8,759	1,513
Kulekhani	Makwanpur	Central	3.39	0.03	4.99	3.64	4.32	1.57	Medium-High	2,969	139
RaviOpi	Kavrepalanchok	Central	2.06	0.04	6.46	3.31	4.88	1.56	Medium-High	4,315	418
Ratmate	Nuwakot	Central	1.94	0.04	5.91	5.85	5.88	1.56	Medium-High	3,793	329
Khaniyapani	Ramechhap	Central	1.61	0.04	7.16	6.06	6.61	1.56	Medium-High	4,065	194
GairiBisouna Deupur	Kavrepalanchok	Central	1.60	0.06	6.46	3.31	4.88	1.55	Medium-High	5,374	689
Nijgadh	Bara	Central	0.35	0.20	4.93	7.20	6.06	1.55	Medium-High	19,614	193
Pyutar	Lalitpur	Central	4.43	0.02	8.40	0.82	4.61	1.55	Medium-High	2,056	166
Gagalphedi	Kathmandu	Central	1.42	0.06	8.86	1.82	5.34	1.55	Medium-High	5,533	514
Bhirpani	Ramechhap	Central	1.95	0.03	7.16	6.06	6.61	1.55	Medium-High	3,253	121
Gunjanagar	Chitawan	Central	0.70	0.15	5.38	2.53	3.96	1.55	Medium-High	15,071	662
Chauthe	Nuwakot	Central	2.01	0.04	5.91	5.85	5.88	1.55	Medium-High	3,535	197
Gaikhur	Gorkha	Western	1.43	0.05	6.44	5.21	5.83	1.54	Medium-High	5,003	307
Darbhung	Gorkha	Western	2.10	0.03	6.44	5.21	5.83	1.54	Medium-High	3,386	147
SarasyunKhark	Kavrepalanchok	Central	1.58	0.05	6.46	3.31	4.88	1.54	Medium-High	5,316	336
Manthali	Makwanpur	Central	3.39	0.03	4.99	3.64	4.32	1.53	Medium-High	2,762	148
Dhawa	Gorkha	Western	1.94	0.04	6.44	5.21	5.83	1.53	Medium-High	3,570	222
Nareshwor	Gorkha	Western	1.88	0.04	6.44	5.21	5.83	1.53	Medium-High	3,692	283
MahankalChaur	Kavrepalanchok	Central	2.38	0.04	6.46	3.31	4.88	1.53	Medium-High	3,470	144
Mankha	Sindhupalchok	Central	0.77	0.08	6.85	6.57	6.71	1.53	Medium-High	7,752	502