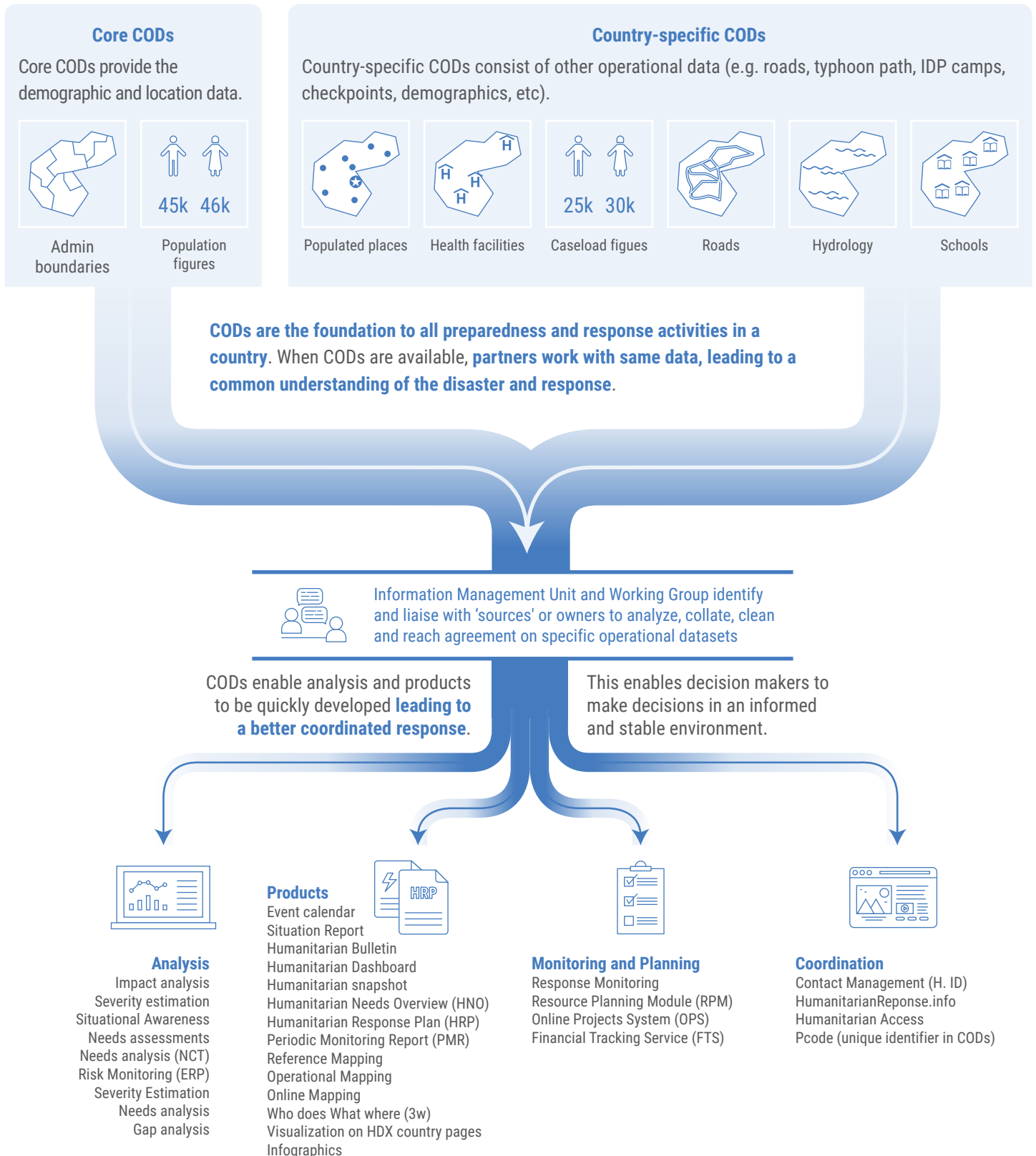


## WHAT ARE CODs?

Common Operational Datasets are **baseline data that are endorsed in country by partners.**

## COD PROCESS



## SCENARIO A: NO CODs



*This map showed us that IDP camp should be 10 km north from village B but its actually 100 km south. Also, are you sure about the number of affected in this region?? Looks like a lot more than xx,xxx...*



*What's taking so long with that new map! The convoy got lost getting to the site and we need new numbers for affected with the next assessment... hurry up!!*

*We should have had good CODs*



*The number affected in the south is not as bad as we thought. Our analysis suggests...*

*Excuse me, but our convoy just called in and ...*



*Eeerr... hmmm... Let me get back to you on the figures..*

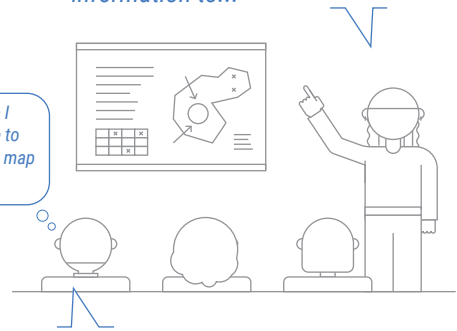


- Misinformed partners
- Incorrect numbers of affected people
- Data generated from CODs is incorrect
- Misleading products, maps, visuals
- Bad analysis on inaccurate data
- Collection and processing of partner data slow and difficult

## SCENARIO B: GOOD CODs PRESENT

*Since all partners have agreed on the CODs, the affected numbers are XXX, XXX, which means we need to get trucks out at sites J to Q. We also have the analysis from the first assessment. The shelter cluster now has the correct information to...*

*Looks like I don't have to make that map anymore*



*Hey mappers, stop making the 3W and lets concentrate on the IDP movements to the south of village B. Please use the population data cleaned by the Gov.*



*Wow! That was fast. Looks like we don't have to walk so far to get food tonight.*

*Cool. I will get the IDP data from that tall guy from the IM working group. He said it was in good shape.*



- Common operational picture among partners
- Partners using the same data have a common base to start working with
- The number of affected people is easier to agree upon
- With increased situational awareness, coordination is easier more effective
- Standardized data means faster processing of data leading to better analysis and products
- Duplicated efforts to acquire baseline data by partners are avoided

## WHAT YOU CAN DO!



**Advocate for use of Pcodes by all humanitarian partners** for improved data sharing and analysis



**Promote use of CODs (baseline data)** to develop common understanding leading to improved coordination and a better response



**Watch for new guidance** from the IASC on CODs and a technical support package to be released