



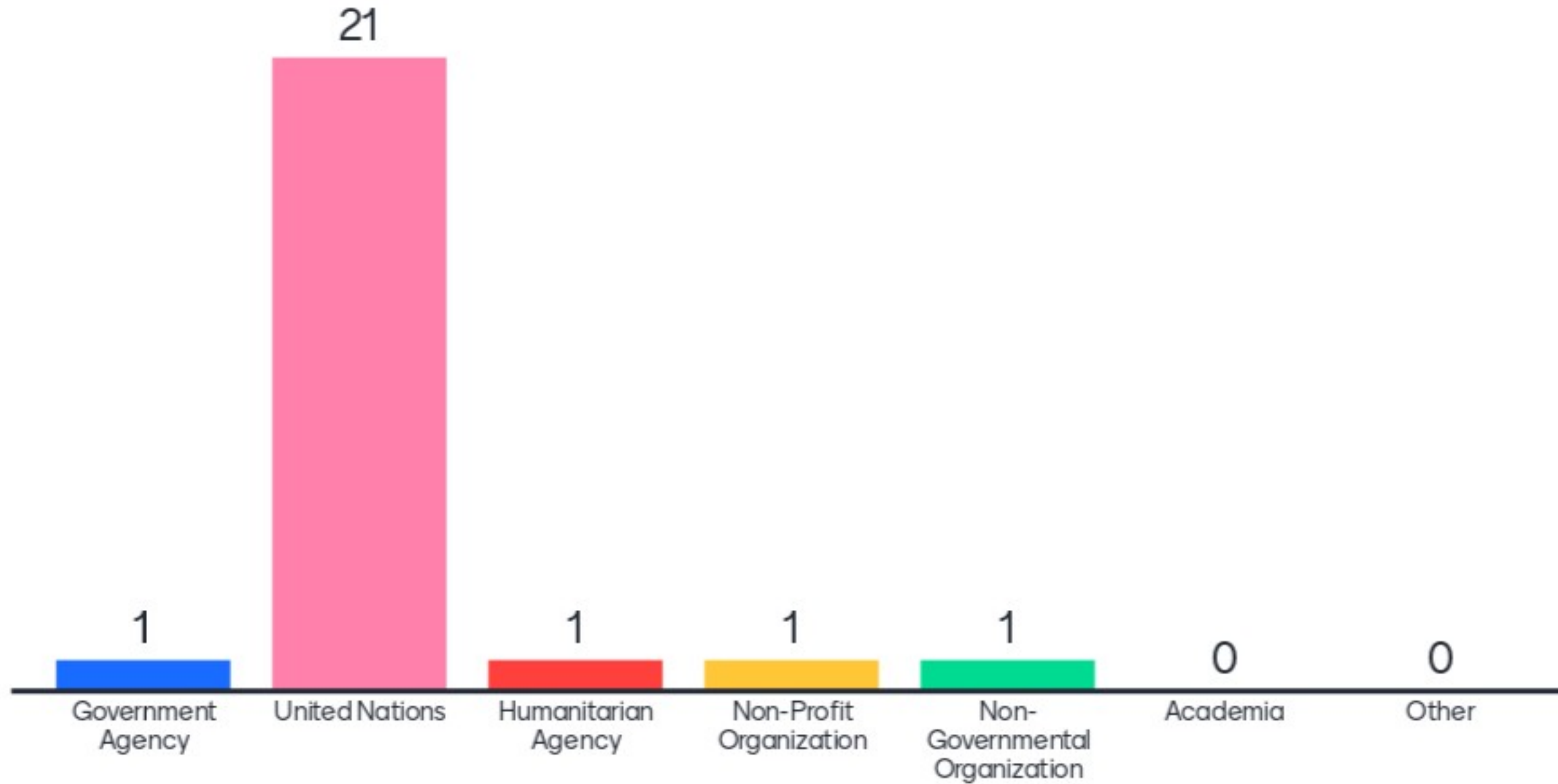
OCHA

# Common Operational Datasets CODs

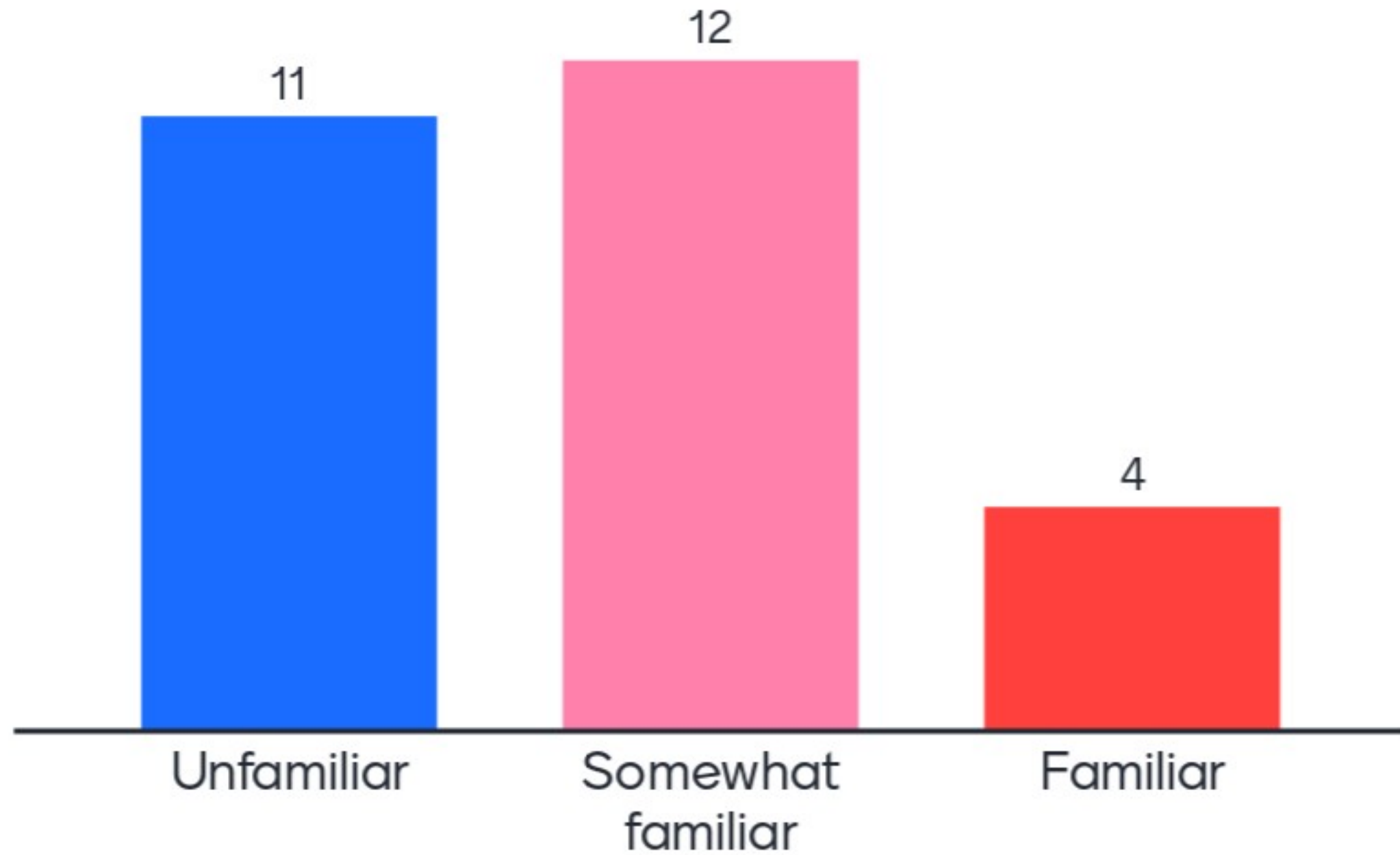
---

Anila Qehaja & Kristina Mackinnon  
July 3, 2020

# What type of organization do you belong to?



# How familiar are you with CODs?



# CONTENTS

---

- **What are CODs?**
- **What types of CODs are there?**
- **What do they look like?**
- **How are they different?**
- **How are they generated?**
- **Where do I find them?**
- **Why are they important?**
- **When do I use them?**

# WHAT ARE CODs?

---

CODs represent:

- Data sets needed to support operations and decision-making for all actors in a humanitarian response
- The basis for all preparedness and response activities
- Best available data that meet minimum criteria for format and attribute information
- Data sets that have unique identification codes (P-codes)

# WHAT TYPES OF CODs ARE THERE?

---

Geographic  
Data

- **Administrative boundaries (level 0, 1, 2, 3, 4)**
- Populated places (settlements)
- Transportation Network (roads, ports)
- Hydrology (streams, water bodies)
- Hypsography (elevation models, contours)
- Health facilities
- Education facilities
- Ports

Linked to  
Geographic  
Data

- **Population statistics**
- Humanitarian Profile (caseload; affected people, people in need)

- **MVP datasets**

# WHAT TYPES OF CODs ARE THERE?

## Core CODs

Core CODs provide the demographic and location data.



Admin boundaries



45k 46k

Population figures

## Country-specific CODs

Country-specific CODs consist of other operational data (e.g. roads, typhoon path, IDP camps, checkpoints, demographics, etc).



Populated places



Health facilities



25k 30k

Caseload figures



Roads



Hydrology



Schools



Admin boundaries



45k 46k

Population figures



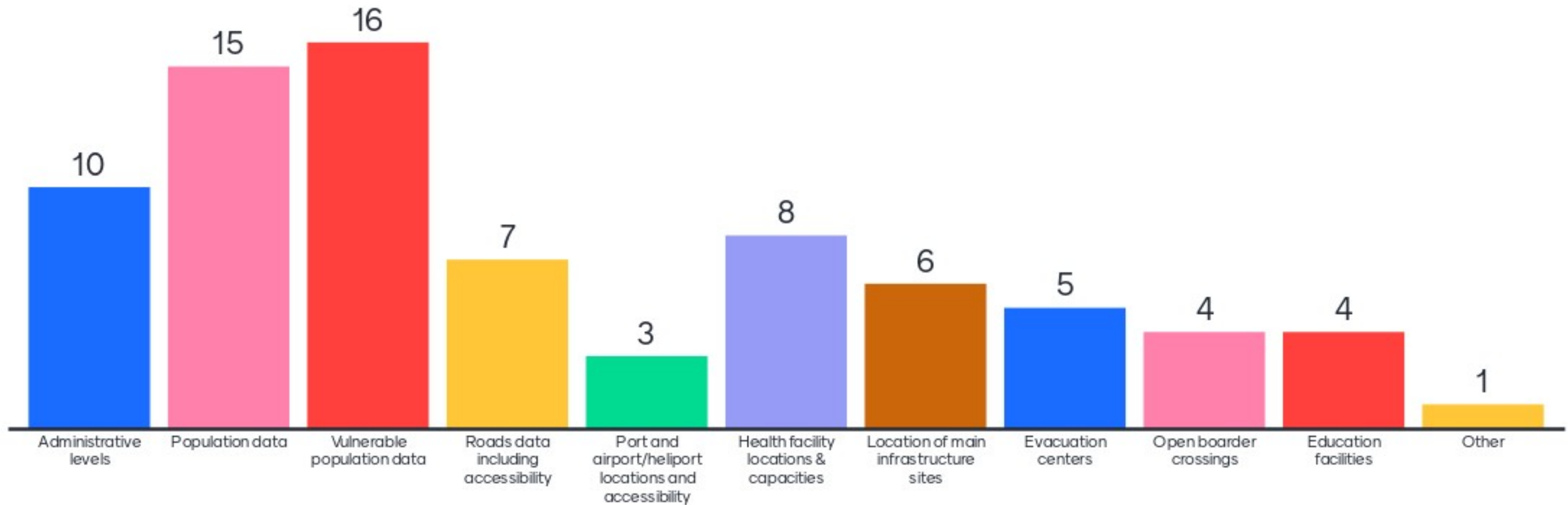
EVENT



25k 30k

Caseload figures

# What are the top three datasets that are the most important to your organization during a response?





# WHAT DO THEY LOOK LIKE?

Example of Administrative Boundaries



ADMINISTRATIVE  
LEVEL  
0



# WHAT DO THEY LOOK LIKE?

Example of Administrative Boundaries

**ADMINISTRATIVE  
LEVEL  
1**



# WHAT DO THEY LOOK LIKE?

Example of Administrative Boundaries

ADMINISTRATIVE  
LEVEL  
2

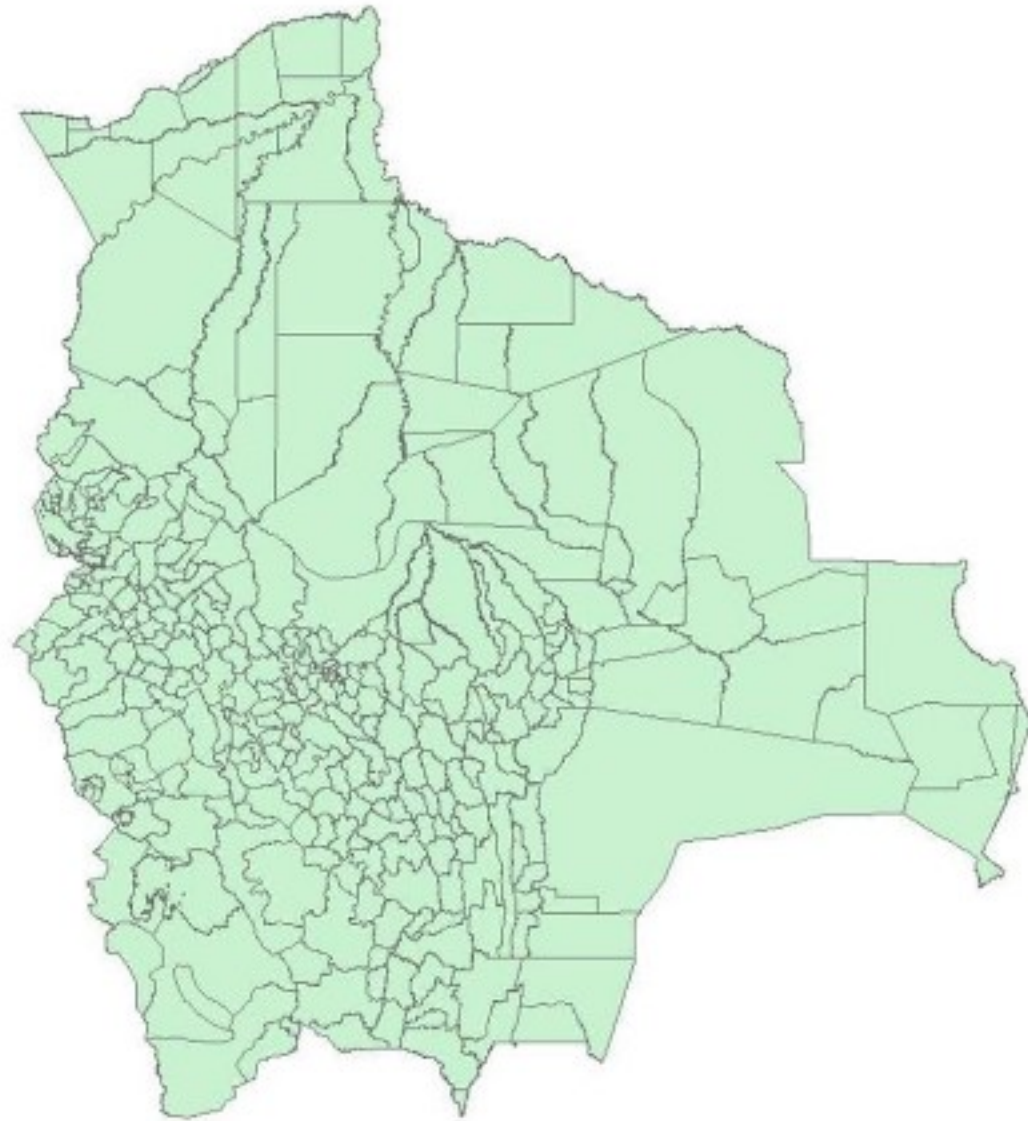


# WHAT DO THEY LOOK LIKE?

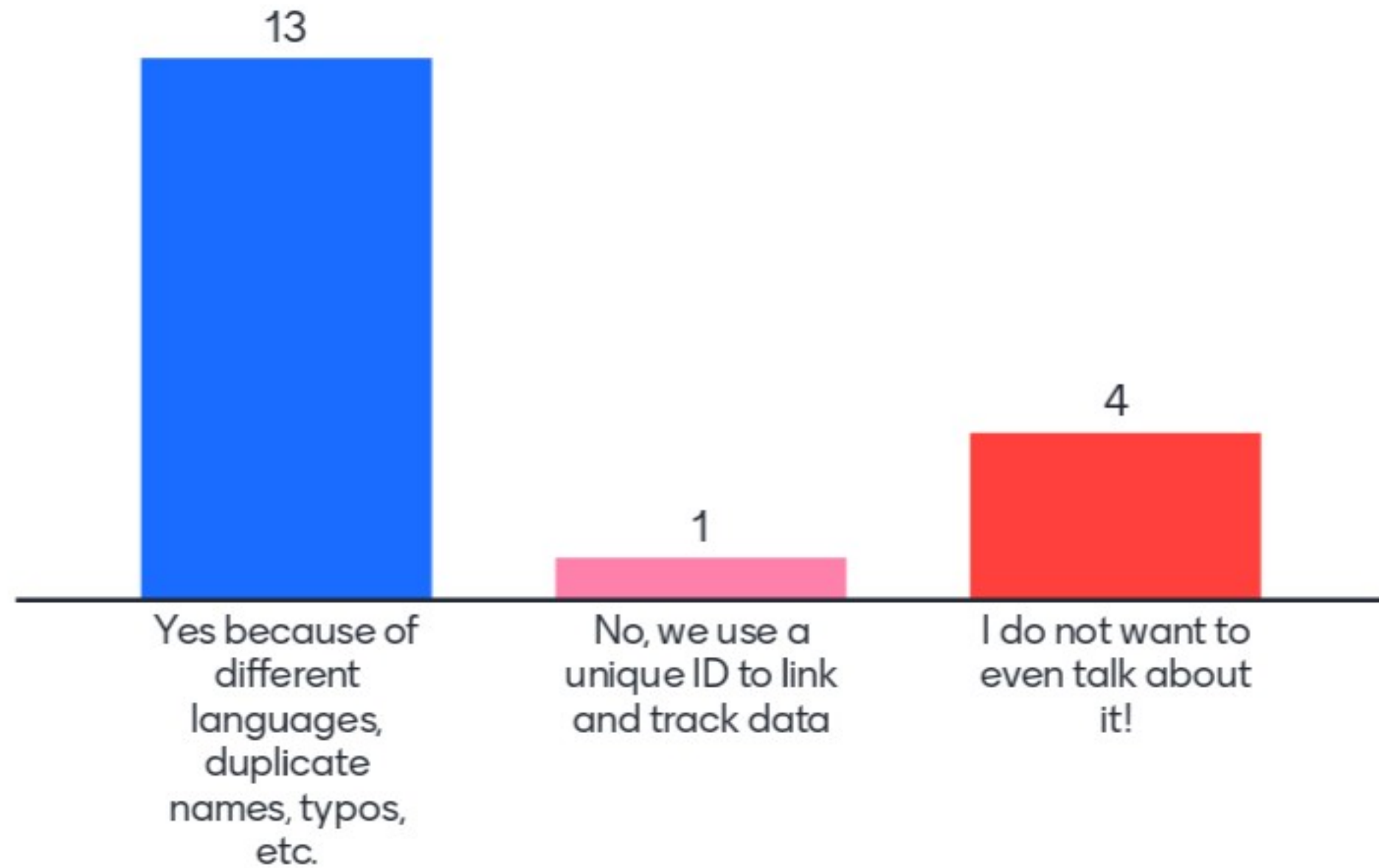
Example of Administrative Boundaries

---

ADMINISTRATIVE  
LEVEL  
3



# Do you ever have challenges linking datasets or confirming locations?



# WHAT DO THEY LOOK LIKE?

## Example of Administrative Boundaries & P-Codes

bol\_admbnda\_adm3\_GeoBolivia\_20190710

FID	Shape *	Shape_Leng	Shape_Area	ADM3_ES	ADM3_PCODE	ADM3_REF	ADM3ALT1ES	ADM3ALT2ES	ADM2_E ^
84	Polygon	0.95355	0.04538	Cruz de Machacamarca	BO040503				Litoral
85	Polygon	3.579234	0.381367	Cuatro Cañadas	BO071106	Cuatro Cañadas			Nuño de Chavez
86	Polygon	0.416092	0.006188	Cuchumuela	BO031405				Punata
87	Polygon	1.307211	0.072336	Cuevo	BO070704				Cordillera
88	Polygon	4.155008	0.338139	Culpina	BO010902				Sur Cinti
89	Polygon	3.028701	0.243845	Curahuara de Carangas	BO040401				Sajama
90	Polygon	1.374429	0.049146	Curva	BO021602				Bautista Saavedra
91	Polygon	0.421545	0.008801	Desaguadero	BO020804				Ingavi
92	Polygon	1.212171	0.029438	El Alto	BO020105				Murillo
93	Polygon	4.304528	0.937502	El Carmen Rvero Torrez	BO071403				German Busch
94	Polygon	2.043474	0.089244	El Choro	BO040103				Cercado
95	Polygon	6.732966	0.67021	El Puente	BO071503				Guarayos
96	Polygon	2.711059	0.179636	El Puente (Tomayapo)	BO060502				Mendez
97	Polygon	3.721848	0.625539	El Sena (Bolivar)	BO090303	El Sena (Bolivar)			Madre de Dios
98	Polygon	1.607943	0.082788	El Torno	BO070105				Andres Bafiez
99	Polygon	1.337182	0.076689	El Villar	BO010405				Tomina
100	Polygon	3.502189	0.187596	Entre Rios	BO031206				Carrasco
101	Polygon	4.268053	0.51785	Entre Rios (La Moreta)	BO060601	Entre Rios (La Moreta)			Buernet O'Connor
102	Polygon	1.714885	0.114358	Escara	BO040502				Litoral
103	Polygon	0.601164	0.010217	Escoma	BO020405				Camacho
104	Polygon	1.472194	0.050269	Esmeralda	BO040505				Litoral
105	Polygon	0.806603	0.031053	Eucaliptus	BO041101				Tomas Barron
106	Polygon	7.385549	2.074969	Exaltación	BO080402	Exaltacion			Yacuma
107	Polygon	1.510404	0.064841	Fernández Alonso	BO071004	Fernandez Alonso			Obispo Santiesteban
108	Polygon	5.98386	0.973896	Filadelfia (Arroyo Grande)	BO090203				Manuripi
109	Polygon	2.84271	0.208115	Gral. Juan José Pérez (Charazani)	BO021601	Gral. Juan Jose Perez (Charazani)			Bautista Saavedra
110	Polygon	1.206186	0.045433	Gral. Saavedra	BO071002				Obispo Santiesteban
111	Polygon	4.130565	0.3046	Guanay	BO020602				Larecaja
112	Polygon	0.801314	0.016207	Guaqui	BO020802				Ingavi
113	Polygon	6.191066	0.537305	Guayaramerín	BO080202	Guayaramerin			Vaca Diez
114	Polygon	3.300277	0.24891	Gutiérrez	BO070705	Gutierrez			Cordillera
115	Polygon	3.577041	0.480871	Hicarale	BO080803				Itoneo



# WHAT DO THEY LOOK LIKE?

## Example of Population Statistics

A	B	C	D	E	F	G	H	I	J	K	L	M	N	O	P	Q	R	S
ADM0_PC	ADM0_ES	ADM1_PC	ADM1_ES	ADM2_PC	ADM2_ES	ADM3_PC	ADM3_ES	T	F	M	T_00_04	T_05_09	T_10_14	T_15_19	T_20_24	T_25_29	T_30_34	T_35_39
BO	Bolivia	BO01	Beni	BO0101	Cercado	BO010101	San Javier	5277	2255	3022	765	598	588	550	477	387	368	313
BO	Bolivia	BO01	Beni	BO0101	Cercado	BO010102	Trinidad	106596	53554	53042	12333	10747	10962	12571	11835	9194	8144	6688
BO	Bolivia	BO01	Beni	BO0102	Iténez	BO010201	Baures	5965	2503	3462	660	595	603	764	560	489	402	388
BO	Bolivia	BO01	Beni	BO0102	Iténez	BO010202	Huacaraje	4111	1812	2299	508	440	446	504	377	330	262	246
BO	Bolivia	BO01	Beni	BO0102	Iténez	BO010203	Magdalen	11377	5326	6051	1466	1340	1313	1318	933	818	762	639
BO	Bolivia	BO01	Beni	BO0103	José Balliv	BO010301	Reyes	13246	6353	6893	1781	1587	1563	1604	1093	945	889	762
BO	Bolivia	BO01	Beni	BO0103	José Balliv	BO010302	Rurrenaba	19195	9050	10145	2443	2143	2274	2253	1736	1545	1407	1182
BO	Bolivia	BO01	Beni	BO0103	José Balliv	BO010303	San Borja	40864	19792	21072	5860	5285	5257	4886	3213	2692	2604	2272
BO	Bolivia	BO01	Beni	BO0103	José Balliv	BO010304	Santa Rosa	9478	4585	4893	1271	1201	1147	1036	764	700	621	611
BO	Bolivia	BO01	Beni	BO0104	Mamoré	BO010401	Puerto Sile	945	407	538	141	117	103	114	79	65	65	64
BO	Bolivia	BO01	Beni	BO0104	Mamoré	BO010402	San Joaqu	6917	3083	3834	852	704	768	923	655	521	492	405
BO	Bolivia	BO01	Beni	BO0104	Mamoré	BO010403	San Ramón	4955	2277	2678	684	618	546	505	432	360	311	276
BO	Bolivia	BO01	Beni	BO0105	Marbán	BO010501	Loreto	3828	1770	2058	623	475	481	380	329	287	233	215
BO	Bolivia	BO01	Beni	BO0105	Marbán	BO010502	San André	12503	5657	6846	1577	1463	1508	1371	1090	923	810	804
BO	Bolivia	BO01	Beni	BO0106	Moxos	BO010601	San Ignaci	21114	9946	11168	3130	2625	2693	2551	1669	1416	1263	1098
BO	Bolivia	BO01	Beni	BO0107	Yacuma	BO010701	Exaltación	6362	2969	3393	863	745	726	763	655	516	429	363
BO	Bolivia	BO01	Beni	BO0107	Yacuma	BO010702	Santa Ana	18439	9065	9374	2339	2252	2320	2205	1536	1318	1083	1059
BO	Bolivia	BO01	Beni	BO0108	Vaca Díez	BO010801	Guayaram	41814	20341	21473	5068	4332	4938	4990	3863	3248	3015	2399
BO	Bolivia	BO01	Beni	BO0108	Vaca Díez	BO010802	Riberalta	89022	43743	45279	12088	10167	10664	10605	8684	7159	6479	5014
BO	Bolivia	BO02	Chuquisac	BO0201	Azurduy	BO020101	Azurduy	10652	5238	5414	1354	1471	1539	982	612	577	672	531
BO	Bolivia	BO02	Chuquisac	BO0201	Azurduy	BO020102	Tarvita	14261	7024	7237	1623	2035	2137	1311	733	648	743	733
BO	Bolivia	BO02	Chuquisac	BO0202	Belisario B	BO020201	Villa Serra	11161	5453	5708	1166	1082	1399	1148	851	585	627	617
BO	Bolivia	BO02	Chuquisac	BO0203	Hernando	BO020301	Huacareta	8349	3949	4400	982	884	1100	791	526	507	521	501
BO	Bolivia	BO02	Chuquisac	BO0203	Hernando	BO020302	Monteagu	24303	11884	12419	2547	2363	3051	2786	1789	1570	1617	1551
BO	Bolivia	BO02	Chuquisac	BO0204	Luis Calvo	BO020401	Huacaya	2541	1139	1402	305	308	333	276	201	132	160	140
BO	Bolivia	BO02	Chuquisac	BO0204	Luis Calvo	BO020402	Macharetí	7418	3377	4041	837	698	901	825	650	569	549	385
BO	Bolivia	BO02	Chuquisac	BO0204	Luis Calvo	BO020403	Muyupam	9720	4597	5123	1091	1001	1193	1058	816	653	626	567
BO	Bolivia	BO02	Chuquisac	BO0205	Nor Cinti	BO020501	Camargo	15644	7909	7735	1678	1667	2028	1556	1081	1068	1022	922
BO	Bolivia	BO02	Chuquisac	BO0205	Nor Cinti	BO020502	Incahuasi	13056	6474	6582	1796	1700	1736	1489	1094	971	832	690

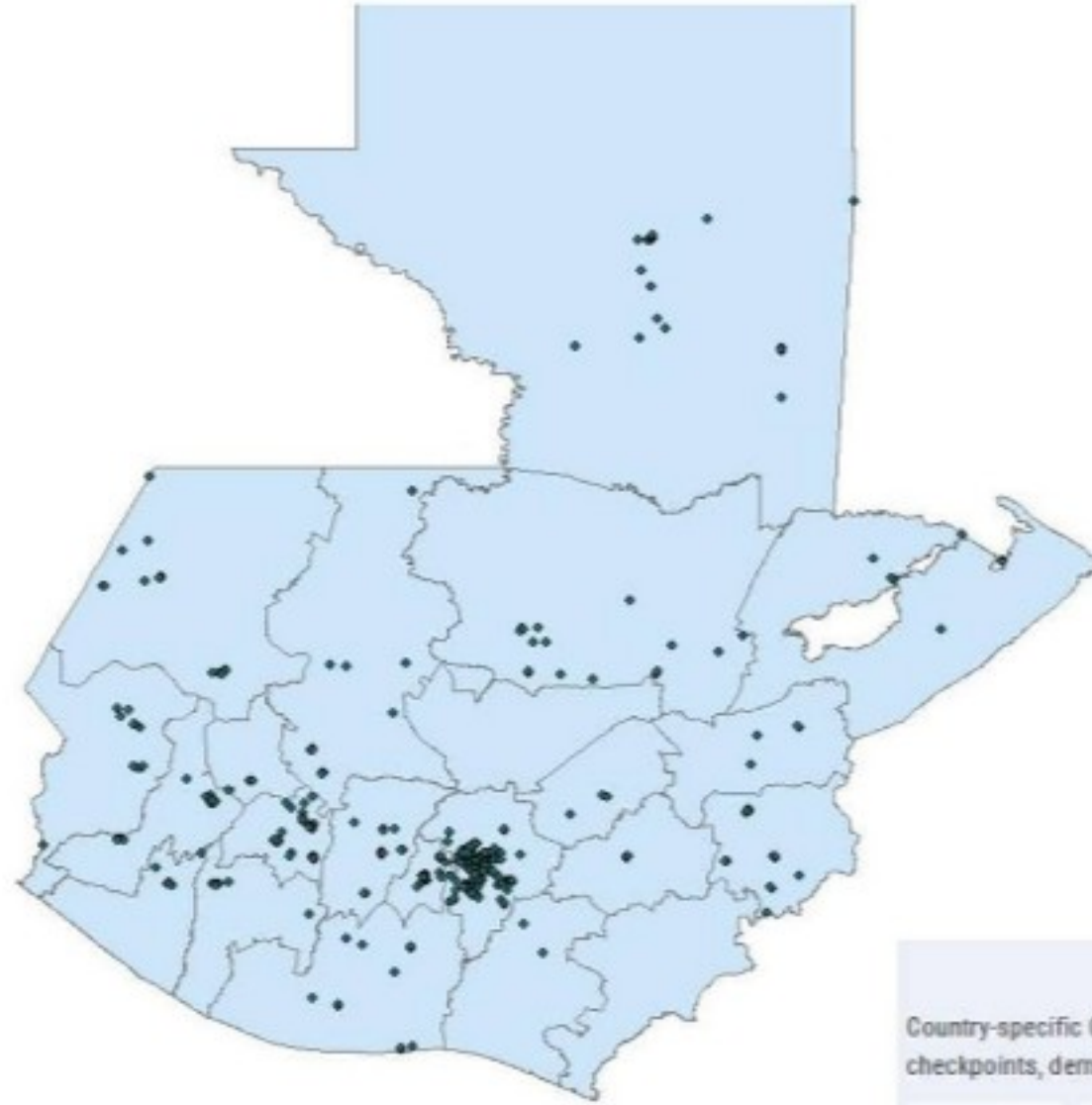


# WHAT DO THEY LOOK LIKE?

## Example of Health Facilities

839

health facilities in  
Guatemala as of  
April 30, 2020



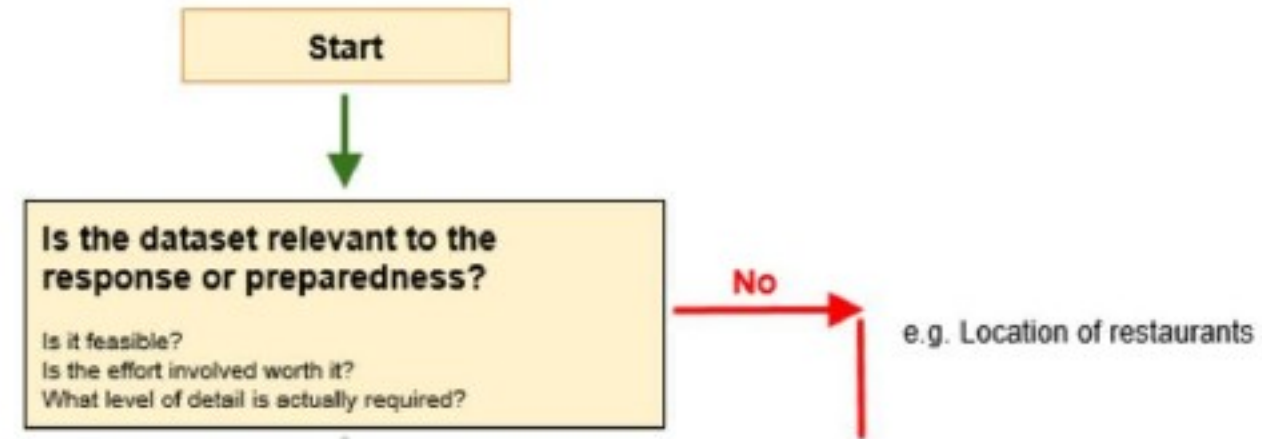
**Country-specific COOs**

Country-specific COOs consist of other operational data (e.g. roads, typhoon path, IDP camps, checkpoints, demographics, etc).

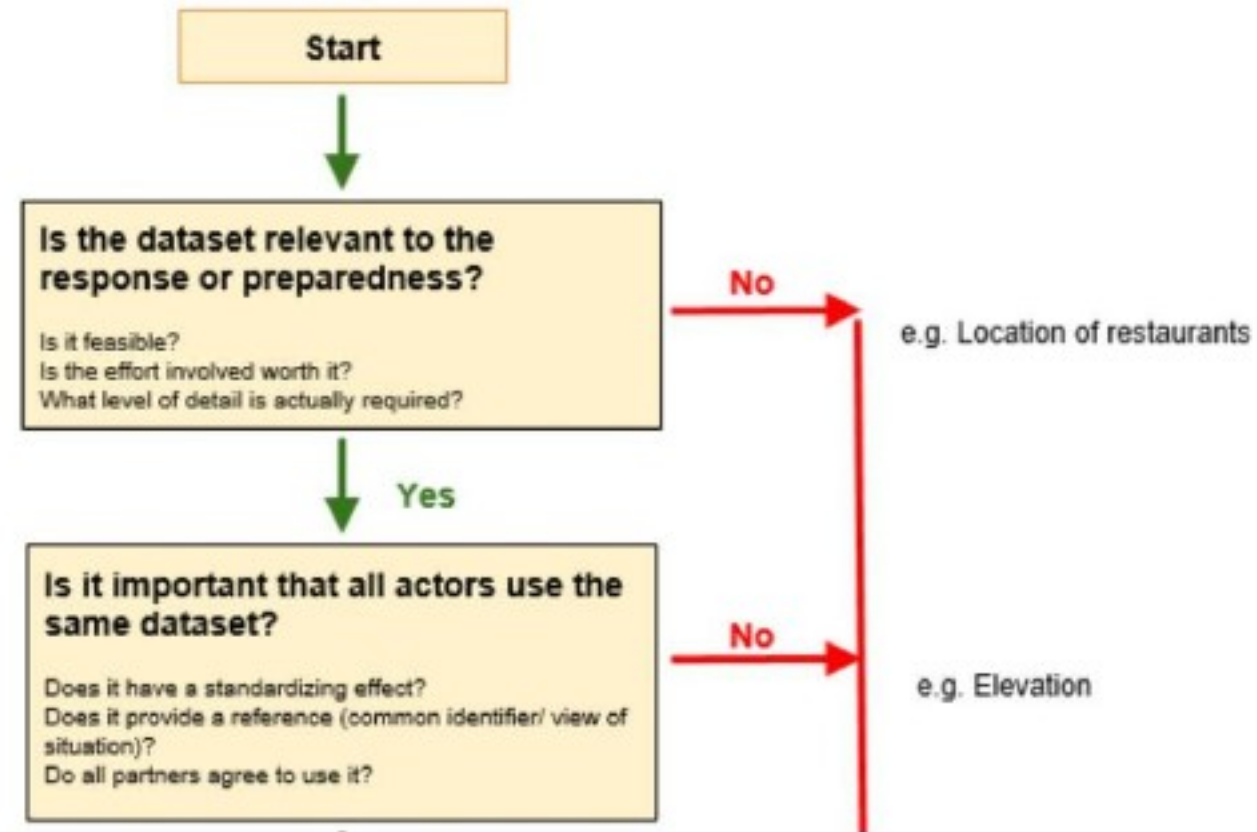
Populated places	Health facilities	Caseload figures	Roads	Hydrology	Schools

# HOW ARE THEY DIFFERENT?

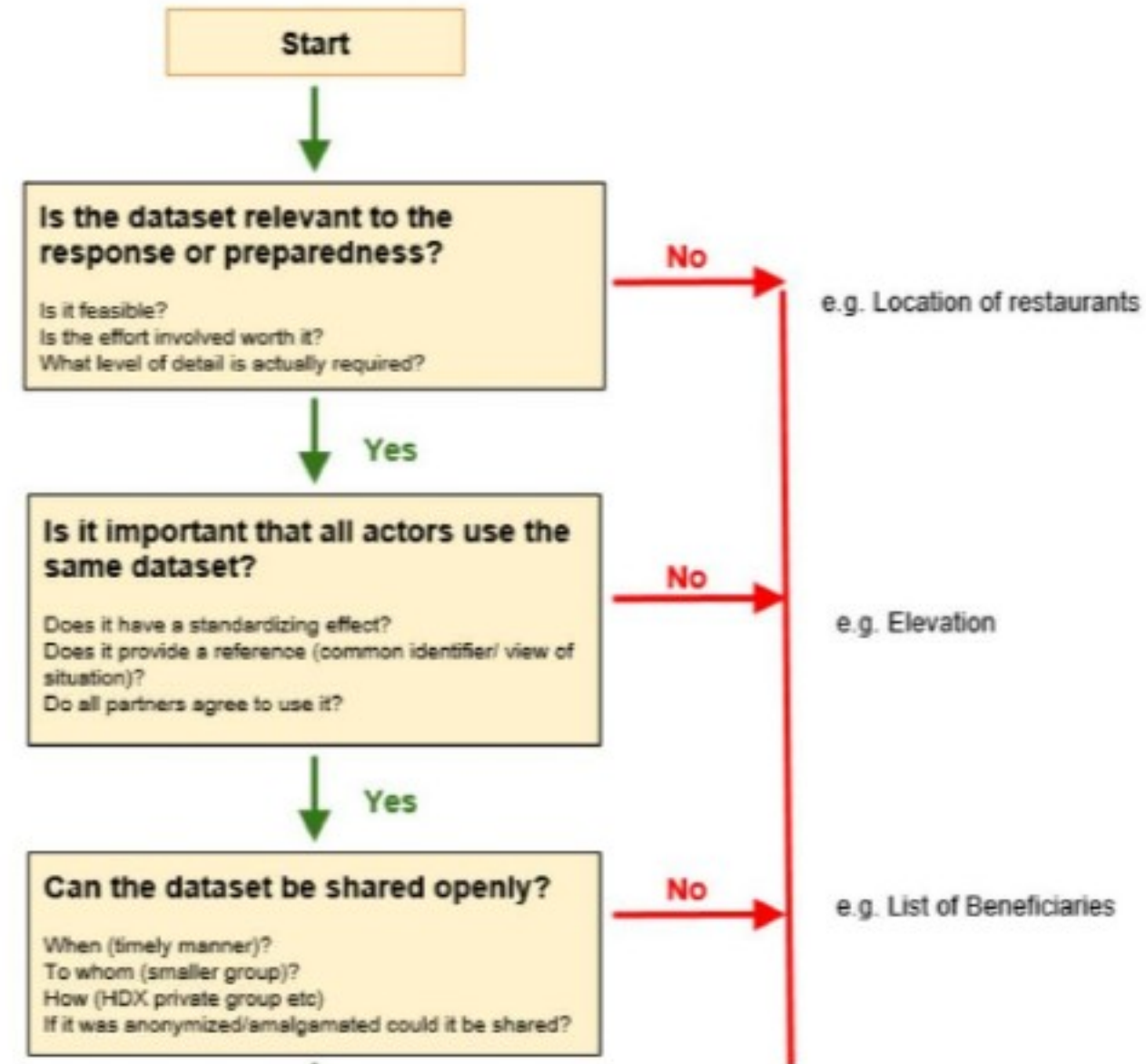
---



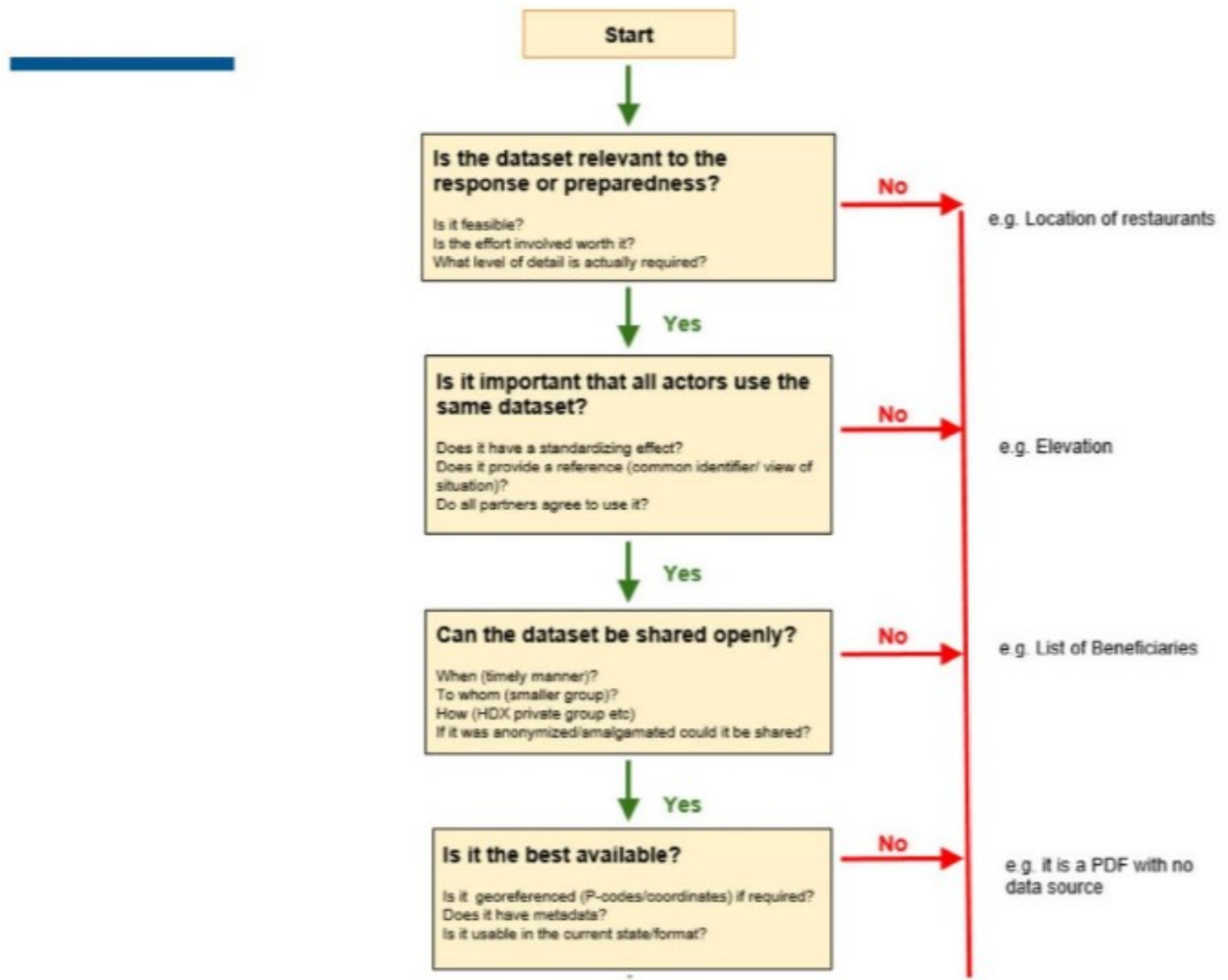
# HOW ARE THEY DIFFERENT?



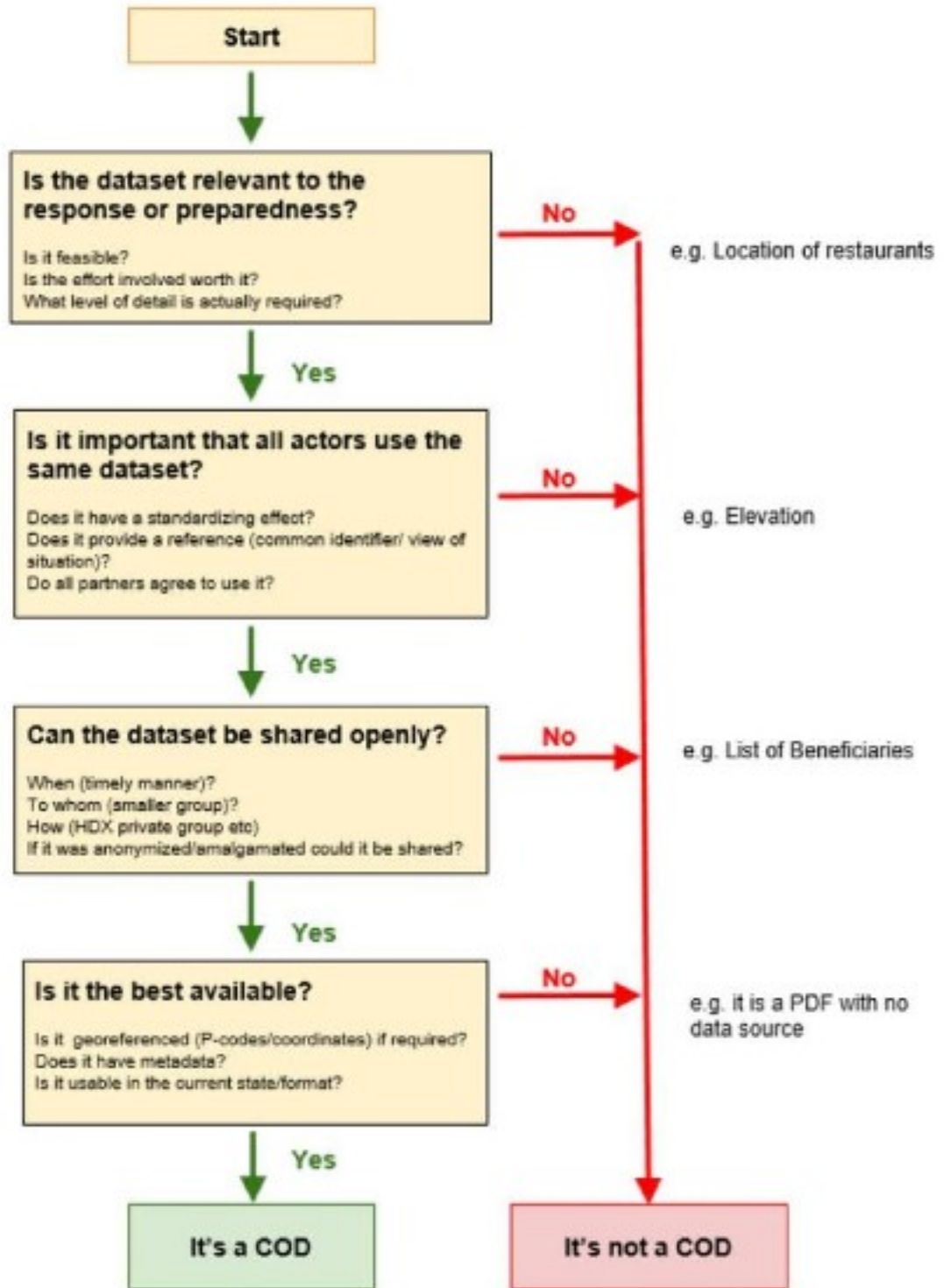
# HOW ARE THEY DIFFERENT?



# HOW ARE THEY DIFFERENT?



# HOW ARE THEY DIFFERENT?

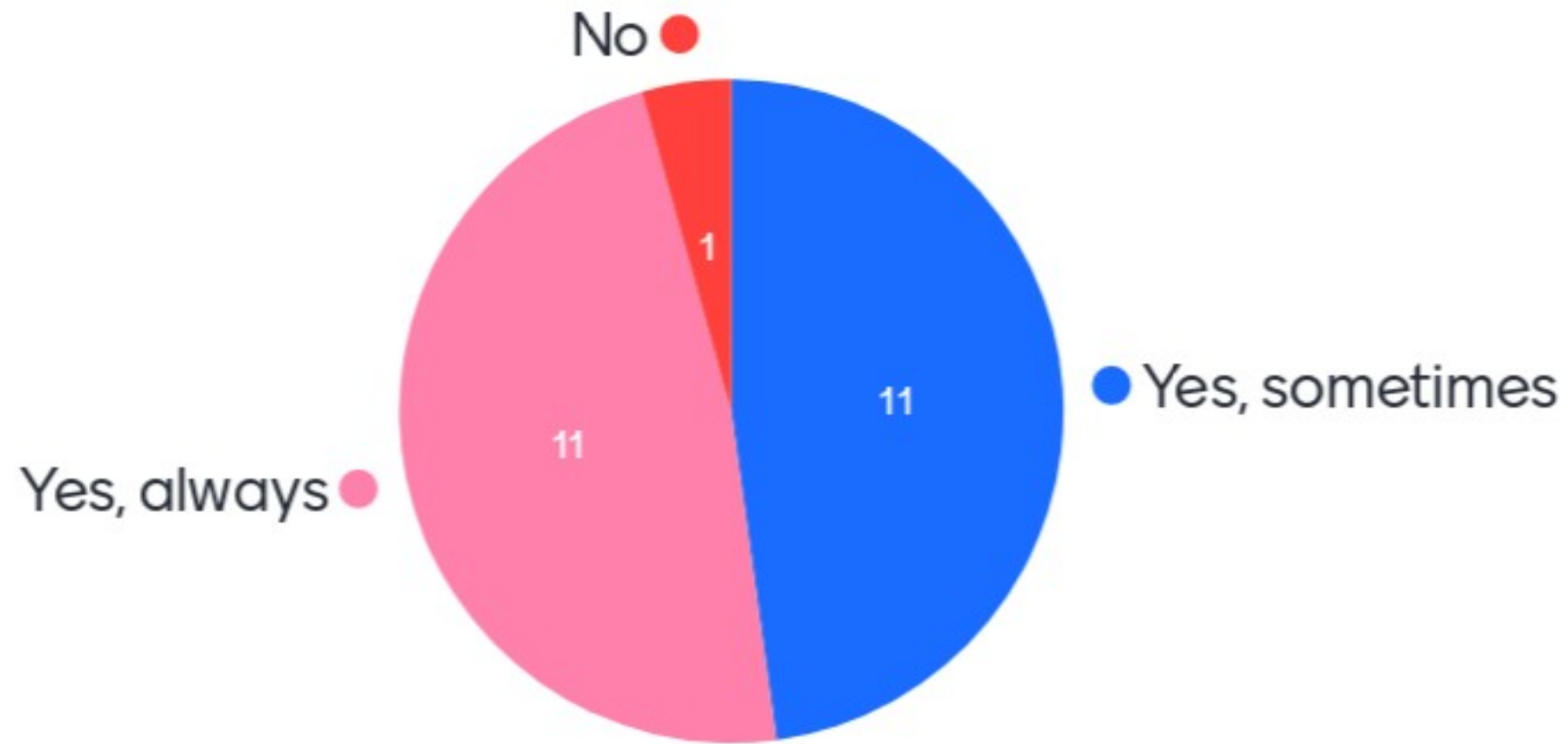


# HOW ARE THEY GENERATED?

---



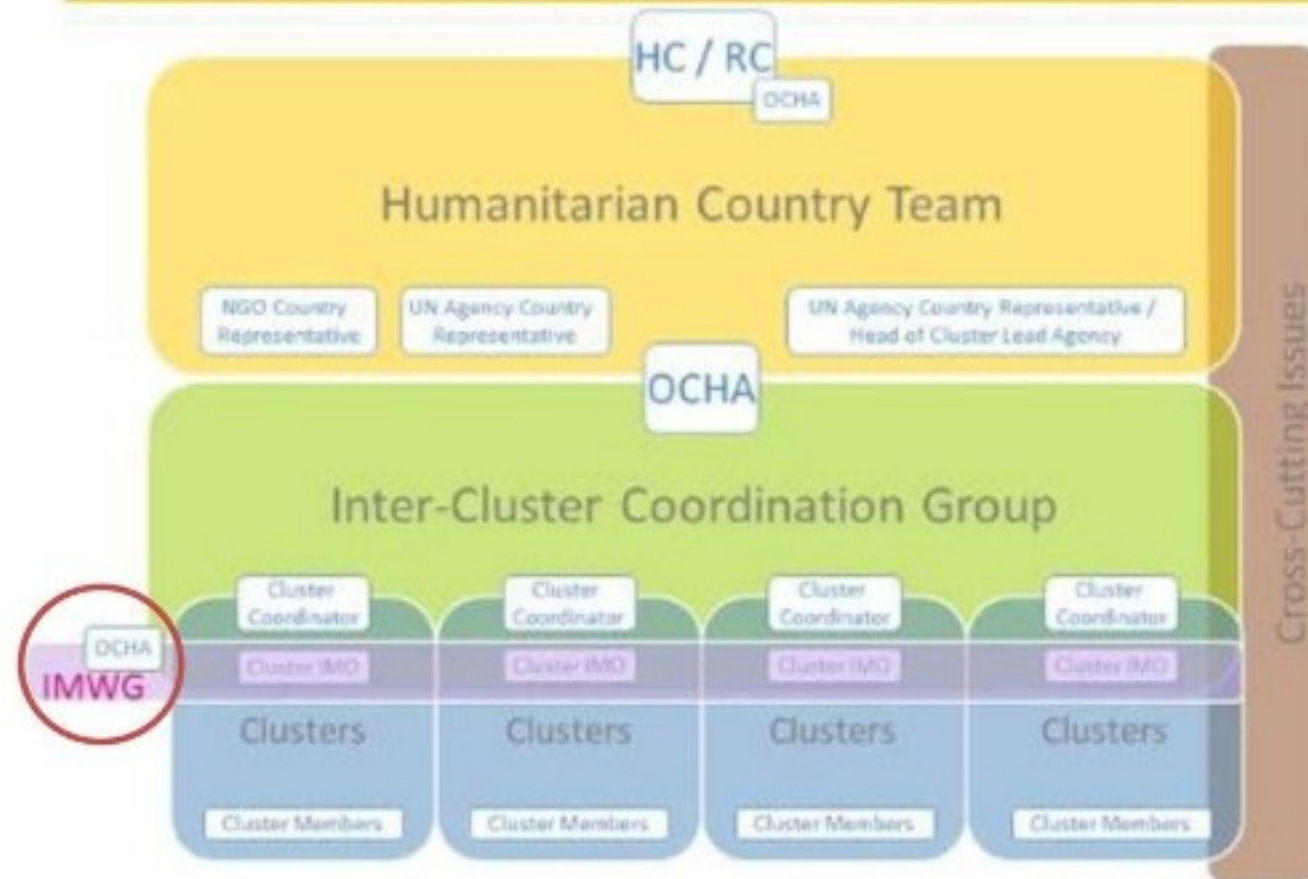
# Has anyone experienced data challenges when preparing or responding?





# CODs ARE PARTNERSHIPS

## Information Management coordination



## Information Management Working Group (IMWG)



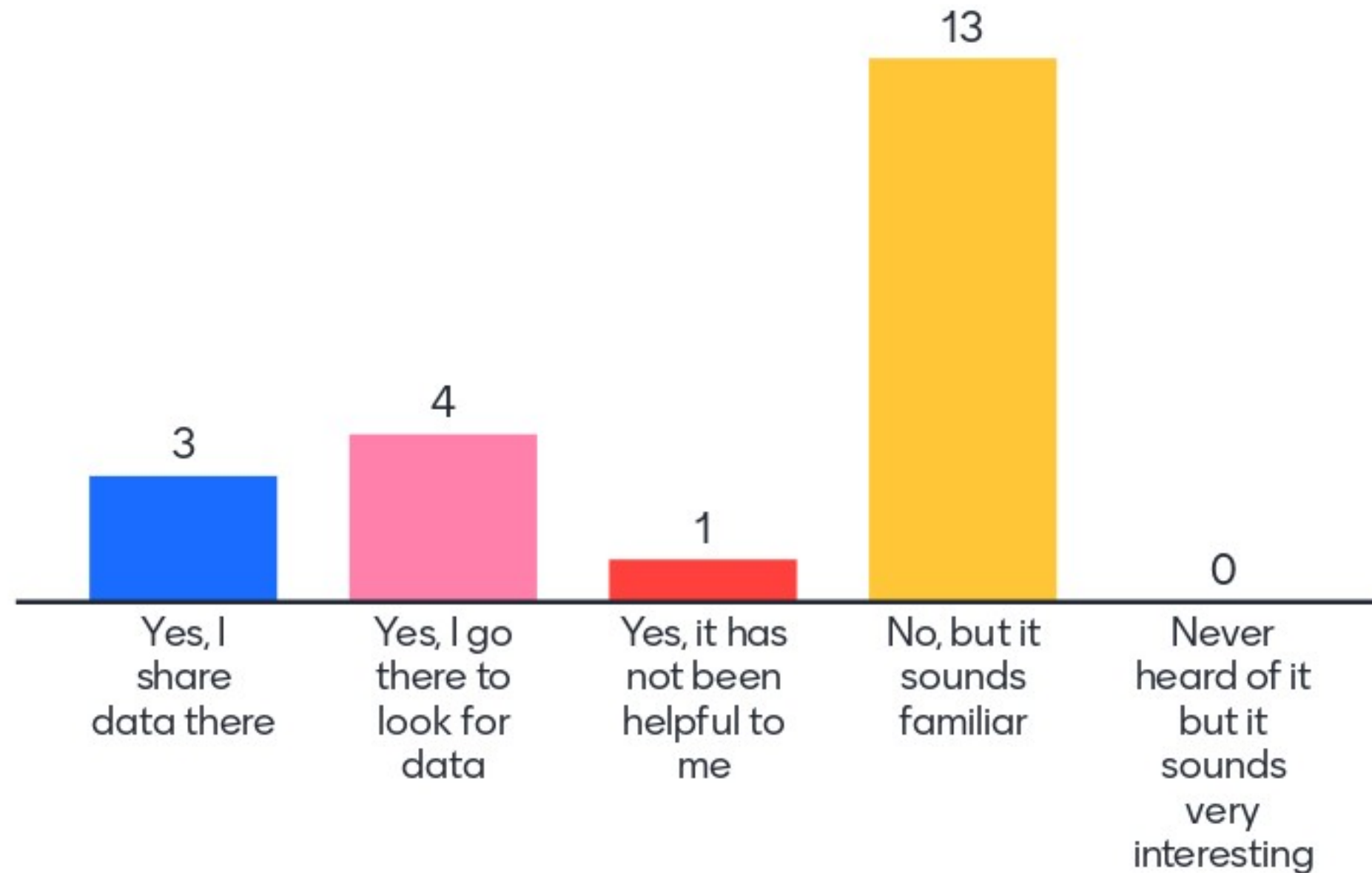
### LEVELS

- Global (Strategic)
- Regional (Preparedness)
- Country (Operational)

### Clusters/Sectors/Agencies



# Are you familiar with HDX (Humanitarian Data Exchange Platform)?



# WHERE DO I FIND THEM?

Humanitarian Data Exchange: <https://data.humdata.org/>

OCHA Services » You haven't optimised your account. [Complete setting up your account](#) [Data Responsibility for COVID-19](#) | ? FAQ | 1 | Anila Qehaja | Log out | Switch to HDX Lite

**HDX** v1.39.3 Search Datasets DATA | LOCATIONS | ORGANISATIONS | **QUICKLINKS** ▼ ADD DATA

HOME / DATASETS

You might also like: [Mexico \(MEX\) location page](#), [National Digital Strategy Unit at the Office of the President of Mexico \(NATIONAL-DIGITAL-STRATEGY-UNIT-AT-THE-OFFICE-OF-THE-PRESIDENT-OF-MEXICO\) organisation page](#)

Data [3]  Show filter:  Show 25 | 50 | 100 ORDER BY **Relevance** ▼

Refine your search: [Clear all](#)

**FEATURED:** -

- CODs [3]
- Sub-national [3]
- Geodata [0]
- Administrative Divisions [1]
- Datasets on request (HDX Connect) [0]
- Datasets with Quick Charts [0]
- Datasets with Showcase [0]
- Datasets with IIXL tags [0]

**LOCATIONS:** -

**Mexican administrative boundary polygon level 0 (country), 1 (estado), and 2 ...**

OCHA ROLAC  
1800+ Downloads  
Updated February 2, 2018 | Dataset date: Feb 2, 2018  
This dataset updates: Every year

Mexican administrative level 0 (country), 1 (estado), and 2 (municipio) boundary polygons These administrative population statistics tables are suitable for linking to the Mexican administrative population statistics available on HDX here.

[ZIPPED SHAPEFILE](#) [ZIPPED GEODATABASE](#) [XLSX](#) |

**Mexican population statistics for administrative level 0, 1, and 2, and popul...**

OCHA ROLAC  
1200+ Downloads  
Updated January 26, 2018 | Dataset date: Jan 25, 2018  
This dataset updates: Every year

Mexican administrative level 0 (country), 1 (estado), and 2 (municipio), and populated places population statistics These administrative population statistics tables are suitable for linking to the Mexican administrative boundary polygons available on HDX here and the Mexican populated places available on HDX here.



[CSV](#) [XLSX](#) [XLS](#) |



# WHERE DO I FIND THEM?



## Core COD Dashboard

Usability Evaluation Overview | Detailed Evaluation | ITOS Live Web Services | Frequently Asked Questions

### Common Operational Dataset: Detailed Evaluation ( as of 2 July 2020 ) OCHA

**Usability Score**  
 Fully usable   
 Partly usable 

**Availability on HDX**  
 Available   
 Unavailable 

**AB-PS Link**  
 Working   
 Not Working 

### STATUS AND RATING BY COUNTRY AND REGION

Region	Status	Country	Administrative Boundary					LINK	Population Statistics					
			ADM1	ADM2	ADM3	ADM4	HDX		LIVE	AB-PS	ADM1	ADM2	ADM3	ADM4
Latin America	Operational	Colombia	●	●	●	●	✓	✓	✓	●	●	●	●	✓
		Venezuela (Bolivarian Republic of)	●	●	●	●	✓	✓	✓	●	●	●	●	✓
	Preparedness	Argentina	●	●	●	●	✓	✓	✓	●	●	●	●	✓
		Belize	●	●	●	●	✓	✓	✓	●	●	●	●	✓
		Bolivia (Plurinational State of)	●	●	●	●	✓	✓	✓	●	●	●	●	✓
		Brazil	●	●	●	●	✓	✓	✓	●	●	●	●	✓
		Chile	●	●	●	●	✓	✓	✓	●	●	●	●	✓
		Costa Rica	●	●	●	●	✓	✓	✓	●	●	●	●	✓
		Ecuador	●	●	●	●	✓	✓	✓	●	●	●	●	✓
		El Salvador	●	●	●	●	✓	✓	✓	●	●	●	●	✓
		French Guiana	●	●	●	●	✓	✓	✓	●	●	●	●	✓
		Guatemala	●	●	●	●	✓	✓	✓	●	●	●	●	✓
		Guyana	●	●	●	●	✓	✓	✓	●	●	●	●	✓
		Honduras	●	●	●	●	✓	✓	✓	●	●	●	●	✓
		Mexico	●	●	●	●	✓	✓	✓	●	●	●	●	✓
		Nicaragua	●	●	●	●	✓	✓	✓	●	●	●	●	✓
		Panama	●	●	●	●	✓	✓	✓	●	●	●	●	✓
		Paraguay	●	●	●	●	✓	✓	✓	●	●	●	●	✓
Peru	●	●	●	●	✓	✓	✓	●	●	●	●	✓		
Suriname	●	●	●	●	✓	✓	✓	●	●	●	●	✓		
Uruguay	●	●	●	●	✓	✓	✓	●	●	●	●	✓		

# WHERE DO I FIND THEM?

## Core COD Dashboard

[Usability Evaluation Overview](#) | 
 [Detailed Evaluation](#) | 
 [ITOS Live Web Services](#) | 
 [Frequently Asked Questions](#)

**Common Operational Dataset: Detailed Evaluation ( as of 2 July 2020 )**  **OCHA**

**Usability Score**

- Fully usable 
- Partly usable 
- Needs improvement 

**Availability on HDX**

- Available 
- Unavailable 
- Unavailable due to policy 

**AB-PS Link**

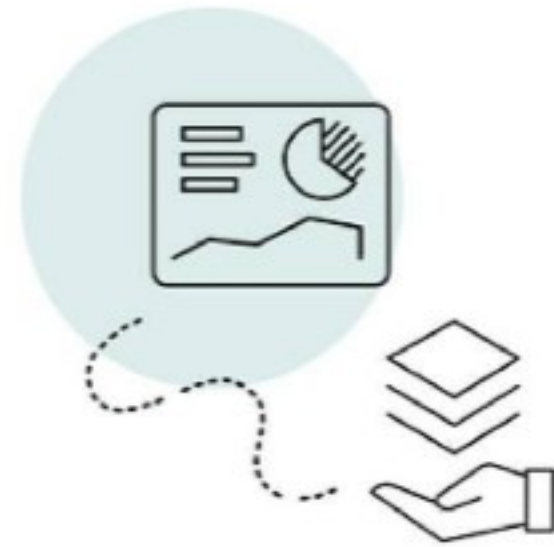
- Working 
- Not Working 

## STATUS AND RATING BY COUNTRY AND REGION

Region	Status	Country	Administrative Boundary					LINK		Population Statistics					
			ADM1	ADM2	ADM3	ADM4	HDX	LIVE	AB-PS	ADM1	ADM2	ADM3	ADM4	HDX	
Caribbean	Operational Preparedness	Haiti	●	●	●	●	✓	✓			●	●	●	●	✓
		Anguilla	●	●	●	●	✓	✓			●	●	●	●	✓
		Antigua and Barbuda	●	●	●	●	✓	✓		✓	●	●	●	●	✓
		Aruba	●	●	●	●	✓	✓			●	●	●	●	✓
		Bahamas	●	●	●	●	✓	✓		✓	●	●	●	●	✓
		Barbados	●	●	●	●	✓	✓		✓	●	●	●	●	✓
		Bermuda	●	●	●	●	✓	✓		✓	●	●	●	●	✓
		British Virgin Islands	●	●	●	●	✓	✓		✓	●	●	●	●	✓
		Cayman Islands	●	●	●	●	✓	✓		✓	●	●	●	●	✓
		Cuba	●	●	●	●	✓	✓		✓	●	●	●	●	✓
		Curacao	●	●	●	●	✓	✓		✓	●	●	●	●	✓
		Dominica	●	●	●	●	✓	✓		✓	●	●	●	●	✓
		Dominican Republic	●	●	●	●	✓	✓		✓	●	●	●	●	✓
		Grenada	●	●	●	●	✓	✓		✓	●	●	●	●	✓
		Guadeloupe	●	●	●	●	✓	✓		✓	●	●	●	●	✓
		Jamaica	●	●	●	●	✓	✓		✓	●	●	●	●	✓
		Martinique	●	●	●	●	✓	✓		✓	●	●	●	●	✓
		Montserrat	●	●	●	●	✓	✓		✓	●	●	●	●	✓
		Puerto Rico	●	●	●	●	✓	✓		✓	●	●	●	●	✓
		Saint Barthelemy	●	●	●	●	✓	✓		✓	●	●	●	●	✓
Saint Kitts and Nevis	●	●	●	●	✓	✓		✓	●	●	●	●	✓		
Saint Lucia	●	●	●	●	✓	✓		✓	●	●	●	●	✓		
Saint Martin (French part)	●	●	●	●	✓	✓		✓	●	●	●	●	✓		
Saint Vincent and The Grenadines	●	●	●	●	✓	✓		✓	●	●	●	●	✓		
Sint Maarten (Dutch part)	●	●	●	●	✓	✓		✓	●	●	●	●	✓		
Trinidad and Tobago	●	●	●	●	✓	✓		✓	●	●	●	●	✓		
Turks and Caicos Islands	●	●	●	●	✓	✓		✓	●	●	●	●	✓		
United States Virgin Islands	●	●	●	●	✓	✓		✓	●	●	●	●	✓		

# WHY ARE THEY IMPORTANT?

---



# WHEN DO I USE THEM?

---



## Analysis

- Impact analysis
- Severity estimation
- Situational Awareness
- Needs assessments
- Needs analysis (NCT)
- Risk Monitoring (ERP)
- Severity Estimation
- Needs analysis
- Gap analysis

## Products

- Event calendar
- Situation Report
- Humanitarian Bulletin
- Humanitarian Dashboard
- Humanitarian snapshot
- Humanitarian Needs Overview (HNO)
- Humanitarian Response Plan (HRP)
- Periodic Monitoring Report (PMR)
- Reference Mapping
- Operational Mapping
- Online Mapping
- Who does What where (3w)
- Visualization on HDX country pages
- Infographics



## Monitoring and Planning

- Response Monitoring
- Resource Planning Module (RPM)
- Online Projects System (OPS)
- Financial Tracking Service (FTS)

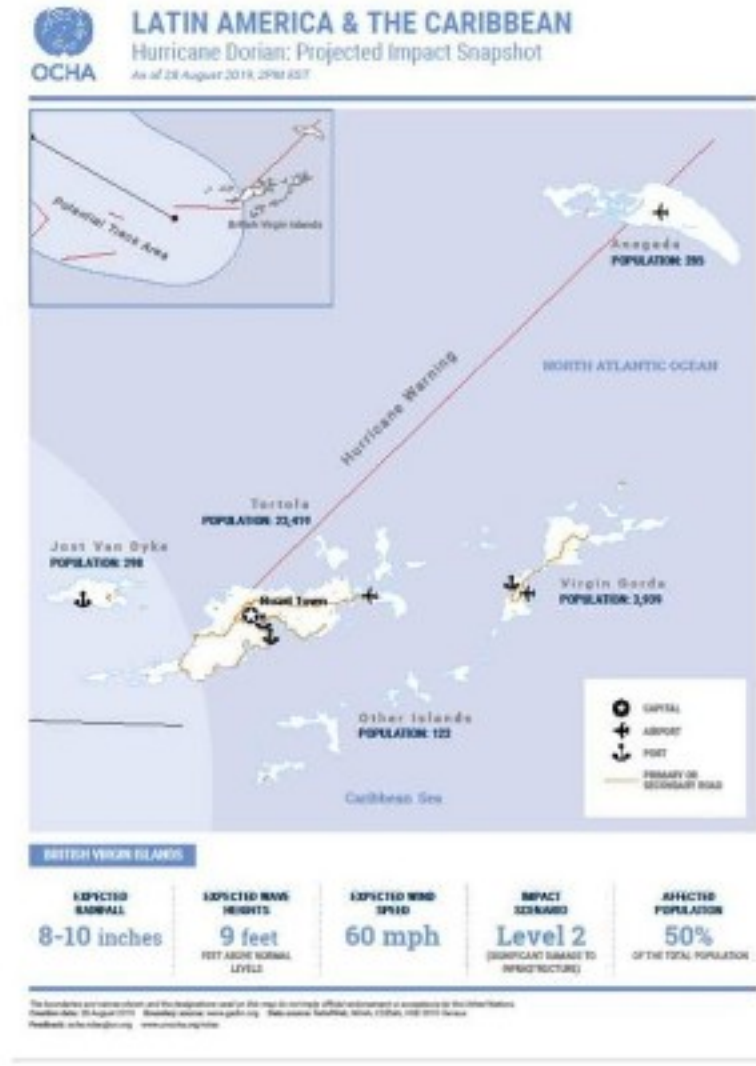
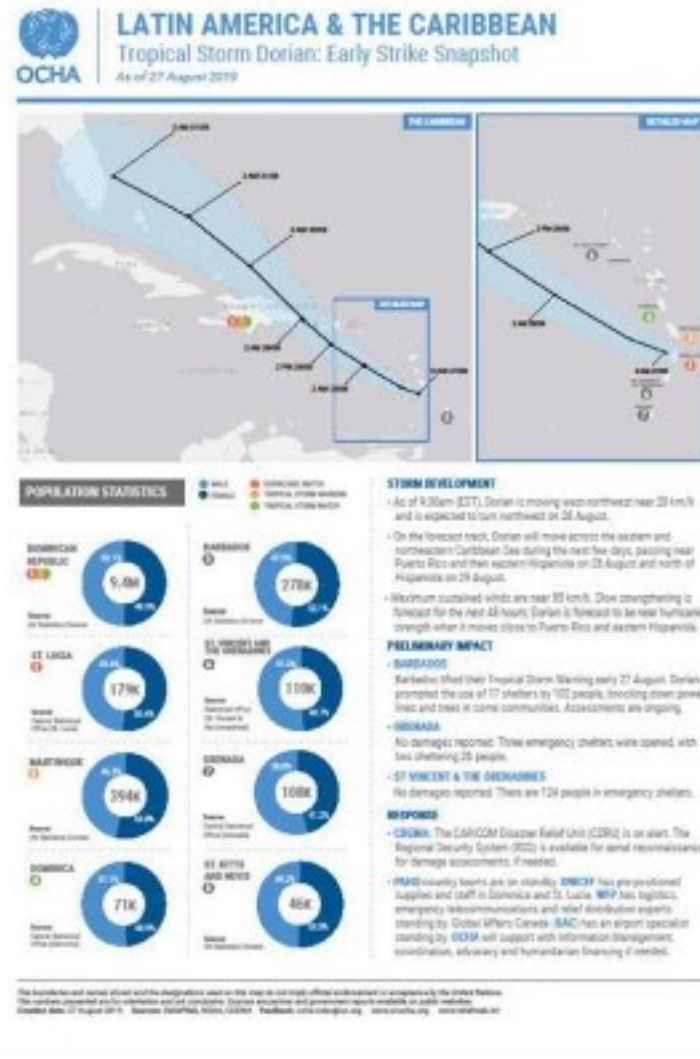


## Coordination

- Contact Management (H. ID)
- HumanitarianResponse.info
- Humanitarian Access
- Pcode (unique identifier in CODs)

# WHEN DO I USE THEM?

## Examples







# MORE INFORMATION ON CODs

## OCHA Information Management Toolbox

**IM Toolbox**

OCHA's Information Management Toolbox is an online space for OCHA's Information Management staff to access current and curated information tools, services, and systems to support humanitarian response and preparedness coordination. The Toolbox is the authoritative reference for OCHA information management tools and systems. The IM Toolbox is an essential part of every Information Management Officer's packing list - for all phases of humanitarian response and preparedness work. A quick url that will get you here is [intoolbox.unocha.org](http://intoolbox.unocha.org).

If you are new to humanitarian information management (IM) the pages in this section are a good place to start. Here you will find links to key documents and introductions to basic IM concepts. More content will be added. Suggestions and examples are welcome, please see the FIS team.

Search the toolbox

**Planning**

Expand all Collapse all

- Strategy and Workplan
- IM Unit Management - People
- IM Unit Management - Technical

**Common Operational Datasets**

Expand all Collapse all

- COD Overview
- P-codes
- Identifying a COD
- Governance & Responsibilities
- Core COD (AB, PS, HP)
- Country-Specific COD
- COD Cycle (Management)

**Humanitarian Programme Cycle**

Expand all Collapse all

- Emergency Response Preparedness
- Needs Assessment
- Analysis in Humanitarian Setting
- Strategic Planning
- Resource Mobilisation
- Implementation and Monitoring

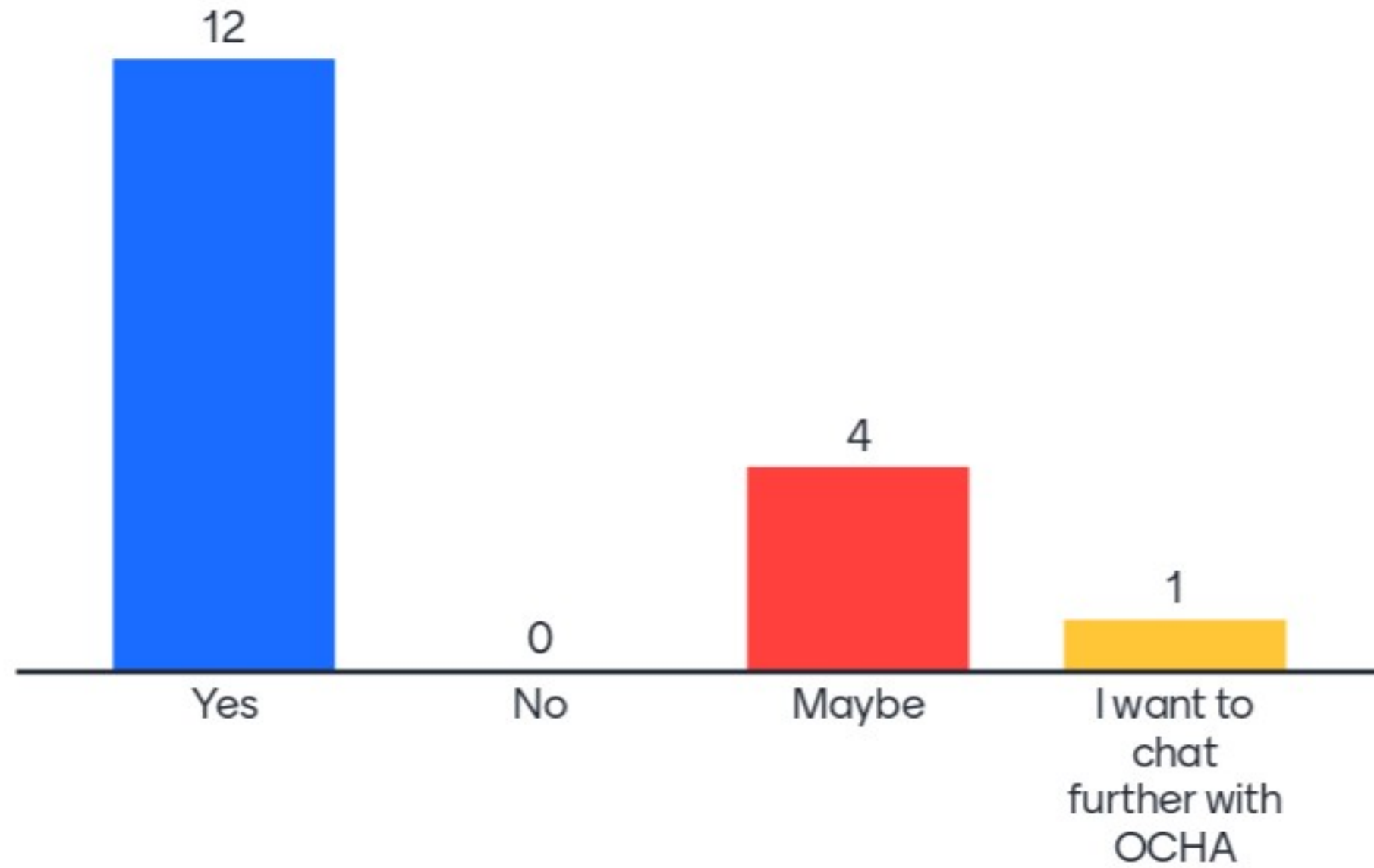
**Other Resources**

- Webinars

**Navigation Menu:**

- IM Toolbox
- Overview
- Questions
- Space Settings
- SPACE SHORTCUTS
- Tutorials
- PAGES
- IM Overview
- OCHA IM Unit
- Common Operational Datasets (CODs)
  - COD Overview
  - P-codes
  - Identifying a COD
  - Governance & Responsibilities
  - Core COD (AB, PS, HP)
  - Country-Specific COD
  - COD Cycle (Management)
- Coordination

# Do you see how your agency could help identify/share CODs?





# THANK YOU FOR YOUR ATTENTION

---

Contact:

Anila Qehaja at [anila.qehaja@un.org](mailto:anila.qehaja@un.org)

Kristina Mackinnon at [mackinnonk@un.org](mailto:mackinnonk@un.org)