



# Field Information Services Section (FIS)

## ArcMap Installation Guidance

Step by Step

### Step1 – Download ArcMap

You can download ArcMap Pro from here [ESRI ArcGIS Desktop \(ArcMap\)](#)

### Step 2 – Review Systems requirements

Before installing or upgrading ArcMap on a virtual or physical machine, ensure that your system meets the minimum requirements to run it, please check the link below:

<https://support.esri.com/en-us/knowledge-base/how-to-verify-an-esri-download-using-the-checksum-000020408>

### Step 3 – Install ArcMap

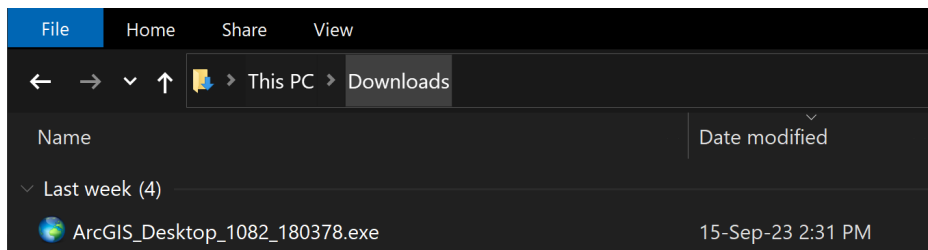
Remember that for any software installation you will either need administrative rights on your computer or you will need to reach out to your ICT colleagues.

Guidelines on how to install ArcMap:

[Installation overview—ArcMap | Documentation \(arcgis.com\)](#)

Or follow step by step installation below.

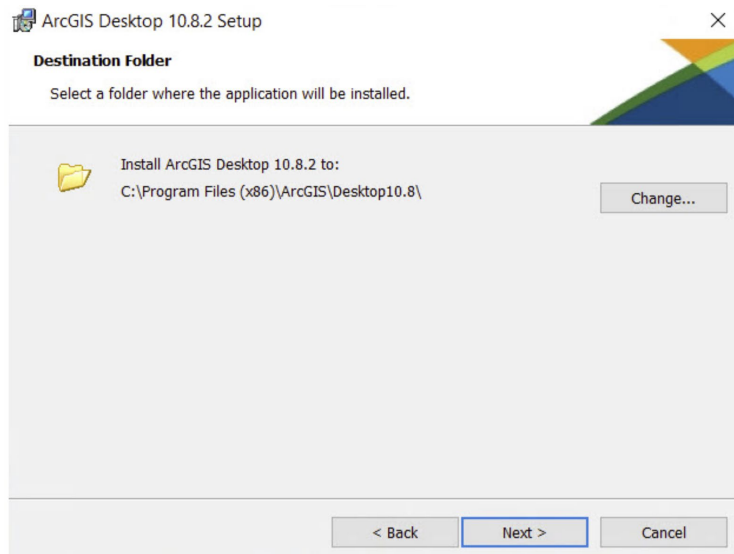
1 – Click on the file you downloaded as below:



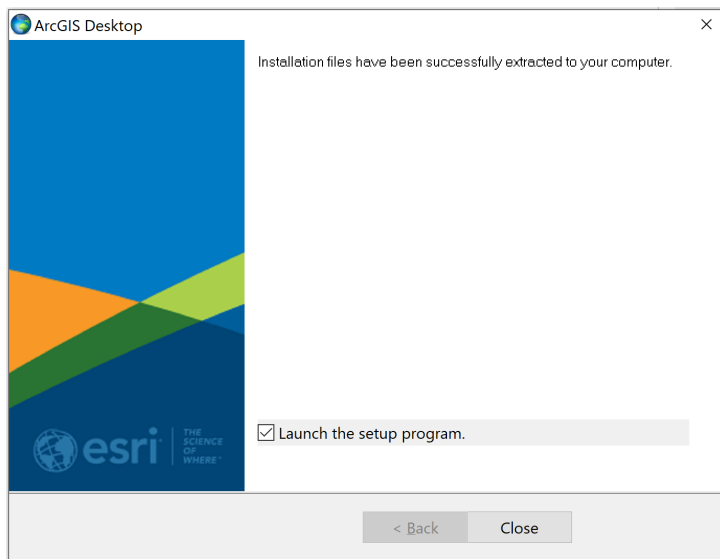
2 – Double-click **ArcGIS\_Desktop\_1082\_180378.exe** file to start the installation process.

Name	Status	Type	Size
ArcGIS_Desktop_1082_180378		Application	1,085,613 ...

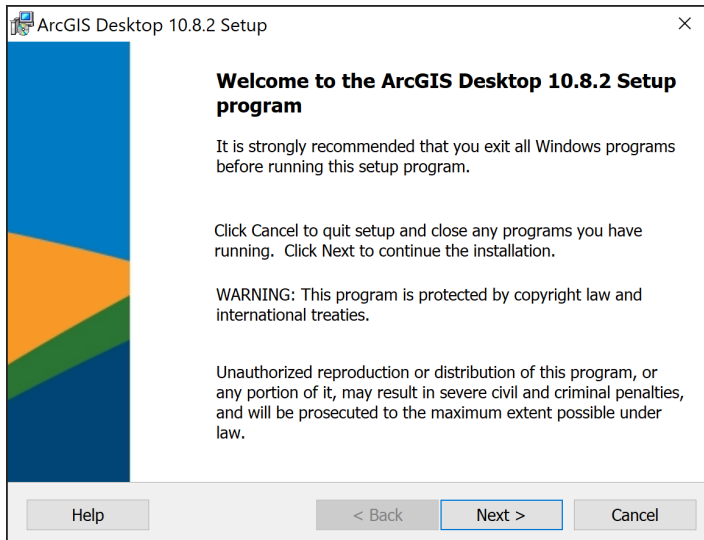
3 – after extracting installation files the below window will appear



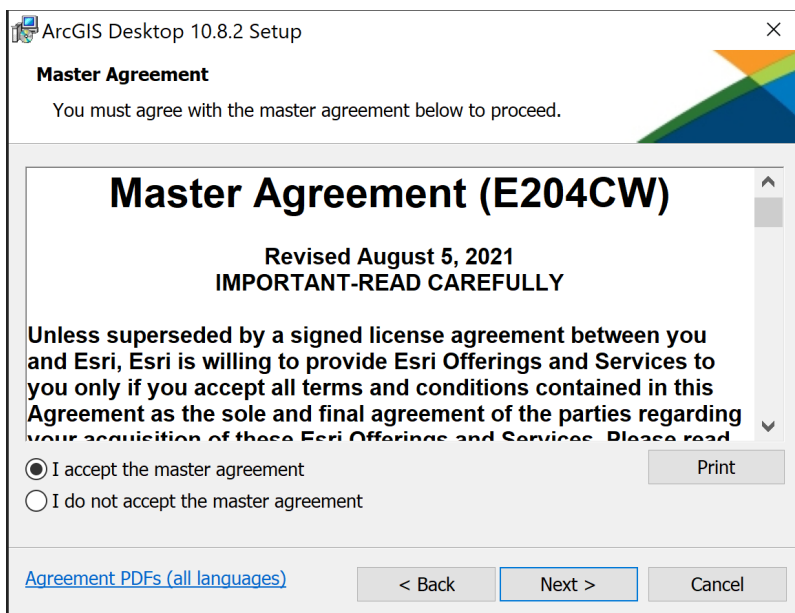
4 – you may be requested admin account, then you need to provide the installation folder as below, click next to continue



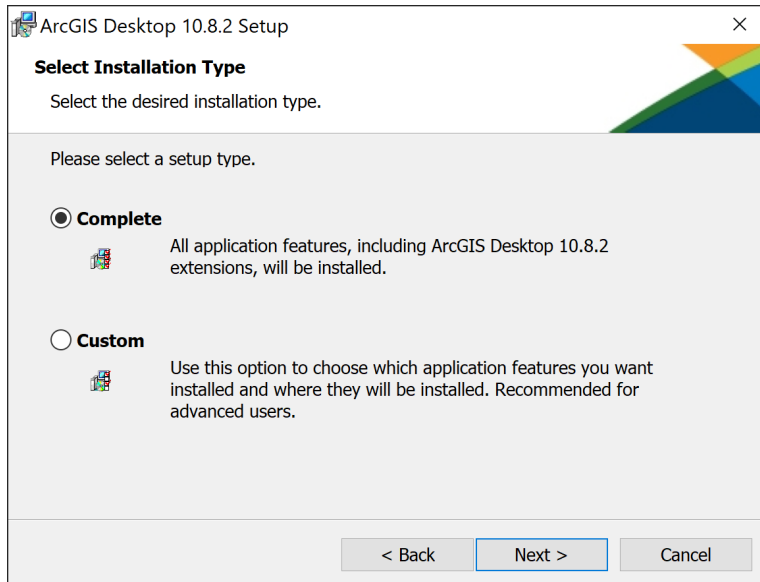
5 – Click next for welcome window



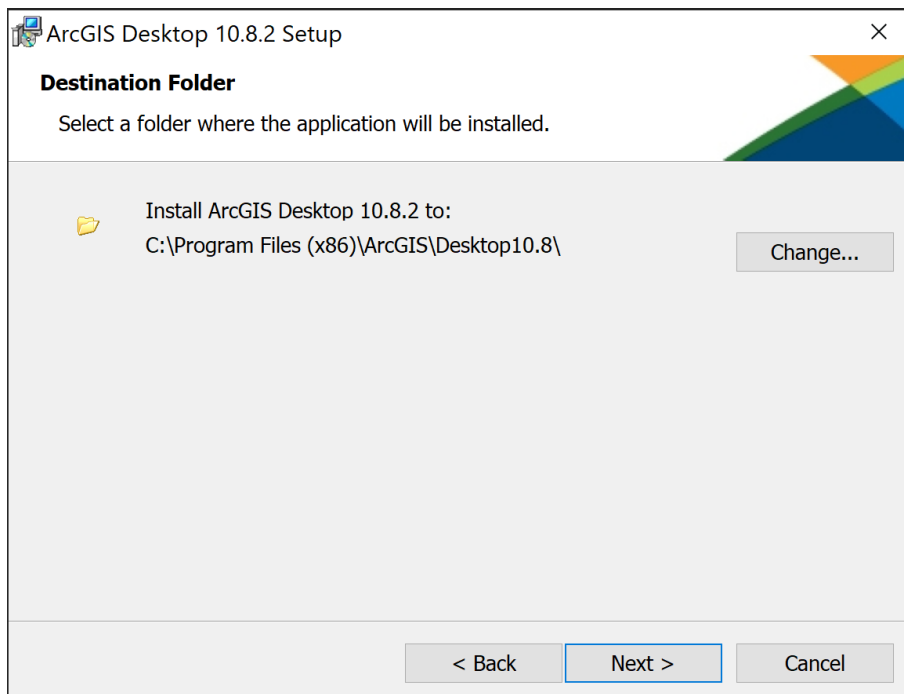
6 – Review the master agreement and choose I accept the master agreement → click next



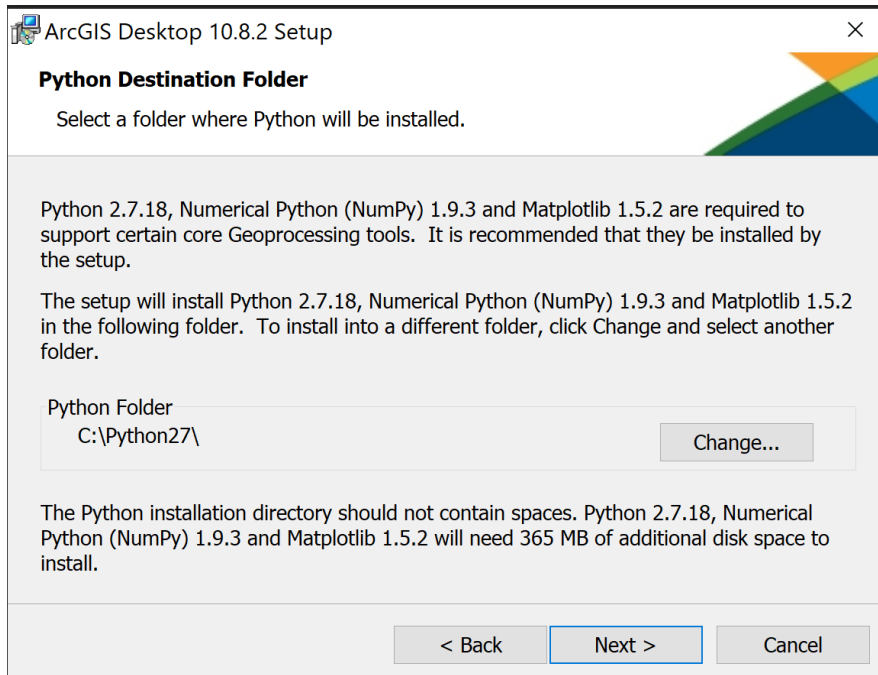
7 – Choose the option **Complete** → click **next**



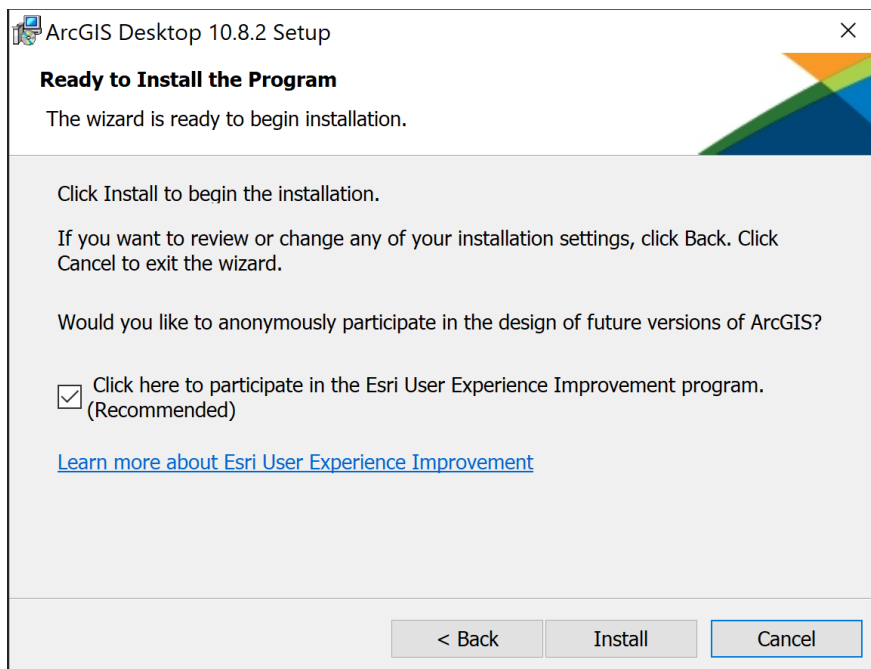
8 – Accept the default location of or click Change to different folder → click **next**.



9 – Accept python default location of or click Change to different folder → click **next**.



10– Under Ready to Install the Program, the option to participate in the Esri User Experience Improvement program is checked by default. Uncheck the box if you don't want to participate → click **Install**.



11– You completed the first part (Installation ArcGIS Pro), the second part to activate your ArcMap license.

Note: ArcG2026,0.8.2 is the current release of ArcMap and will continue to be supported until March 01, 2026 as established in the [ArcMap Product Lifecycle](#).