



Field Information Services Section (FIS)

How to Deauthorize single use licenses in ArcGIS Pro

As of September 2023

Deauthorize single use licenses in ArcGIS Pro

Esri Technical Support
Last Published: October 6, 2020

<https://support.esri.com/en-us/knowledge-base/how-to-deauthorize-single-use-licenses-in-arcgis-pro-000024065>

Summary

The following workflows document how to deauthorize a single use license in ArcGIS Pro using online or offline methods.

Procedure

Online Deauthorization:

1. Launch ArcGIS Pro.
2. Click **Settings** in the lower left corner of the ArcGIS Pro start page. On the **Settings** page, click **Licensing** and **Configure your licensing options**.

ArcGIS P

Licensing

ArcGIS Pro Named User License

Name	Licensed	Expires
Basic	No	N/A
Standard	No	N/A
Advanced	Yes	31/08/2026

Esri Extensions

Name	Licensed	Expires
3D Analyst	No	N/A
Aviation Airports	No	N/A
Aviation Charting	No	N/A
Bathymetry	No	N/A
Business Analyst	No	N/A
Data Interoperability	No	N/A
Data Reviewer	No	N/A
Defense Mapping	No	N/A

Settings

Authorize ArcGIS Pro to work offline i

Show license expiration warning messages.

Licensing Portal

<https://www.arcgis.com/>

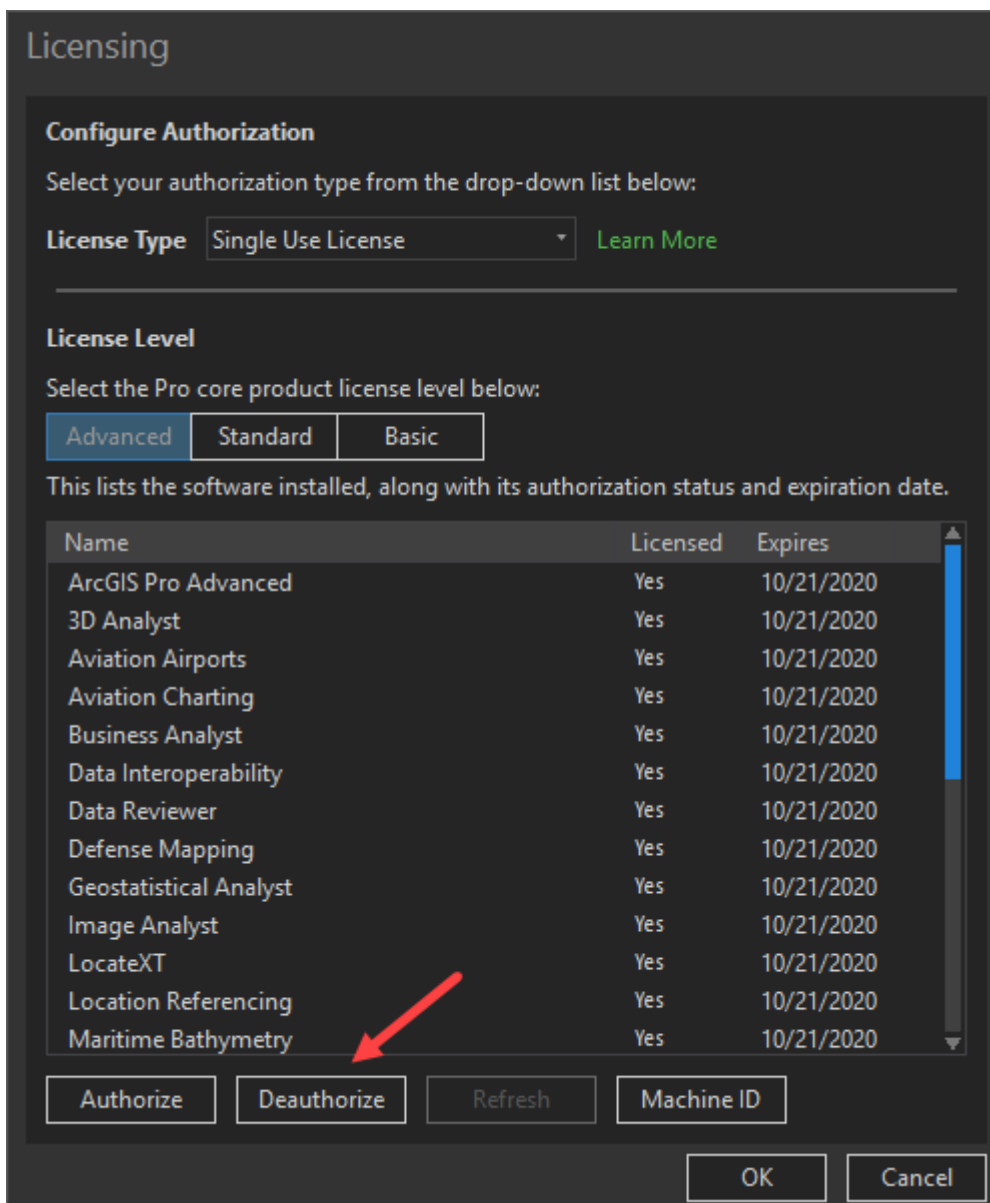
Workstation Alias i

ArcGISPro_242 Edit

Configure your licensing options

Manage your data licensing

3. In the **Licensing** dialog box, click **Deauthorize**.



4. A pop-up displays, reading **the successful deauthorization of single use feature will require ArcGIS Pro to shut down**. Click **OK**.

5. Under **Deauthorization Method**, select **Deauthorize with Esri now using the Internet**.

The image shows a screenshot of a software dialog box titled "Software Authorization Wizard". The main heading is "Deauthorization Method" with the instruction "Select the method you want to use to deauthorize the software." There are three radio button options: 1) "Deauthorize with Esri now using the Internet." (selected), with a sub-note "(This automatic method is the easiest way to deauthorize. It requires an Internet connection.)"; 2) "Deauthorize at Esri's website or by email to receive your deauthorization file."; 3) "I have received a deauthorization file from Esri and am now ready to finish the deauthorization process." Below the third option is an empty text input field and a "Browse..." button. At the bottom, there are three buttons: "< Back", "Next >" (highlighted with a blue border), and "Cancel".

Software Authorization Wizard

Deauthorization Method
Select the method you want to use to deauthorize the software.

Deauthorize with Esri now using the Internet.
(This automatic method is the easiest way to deauthorize. It requires an Internet connection.)

Deauthorize at Esri's website or by email to receive your deauthorization file.

I have received a deauthorization file from Esri and am now ready to finish the deauthorization process.

6. Under **Deauthorization Options**, select the features to deauthorize. The licenses are now deauthorized.

Software Authorization Wizard

Deauthorization Options
Select the features you would like to deauthorize.

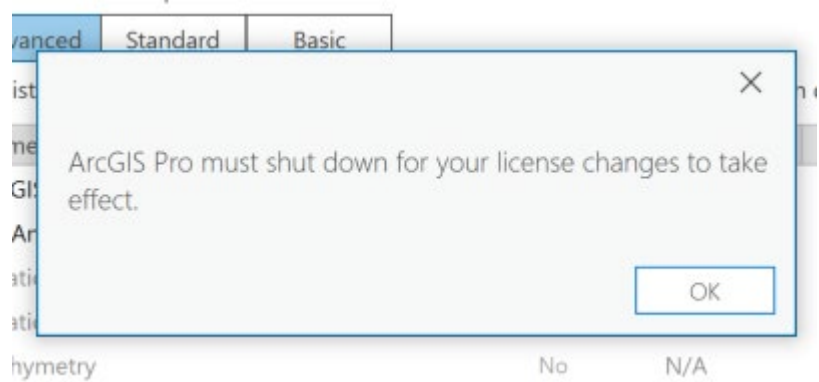
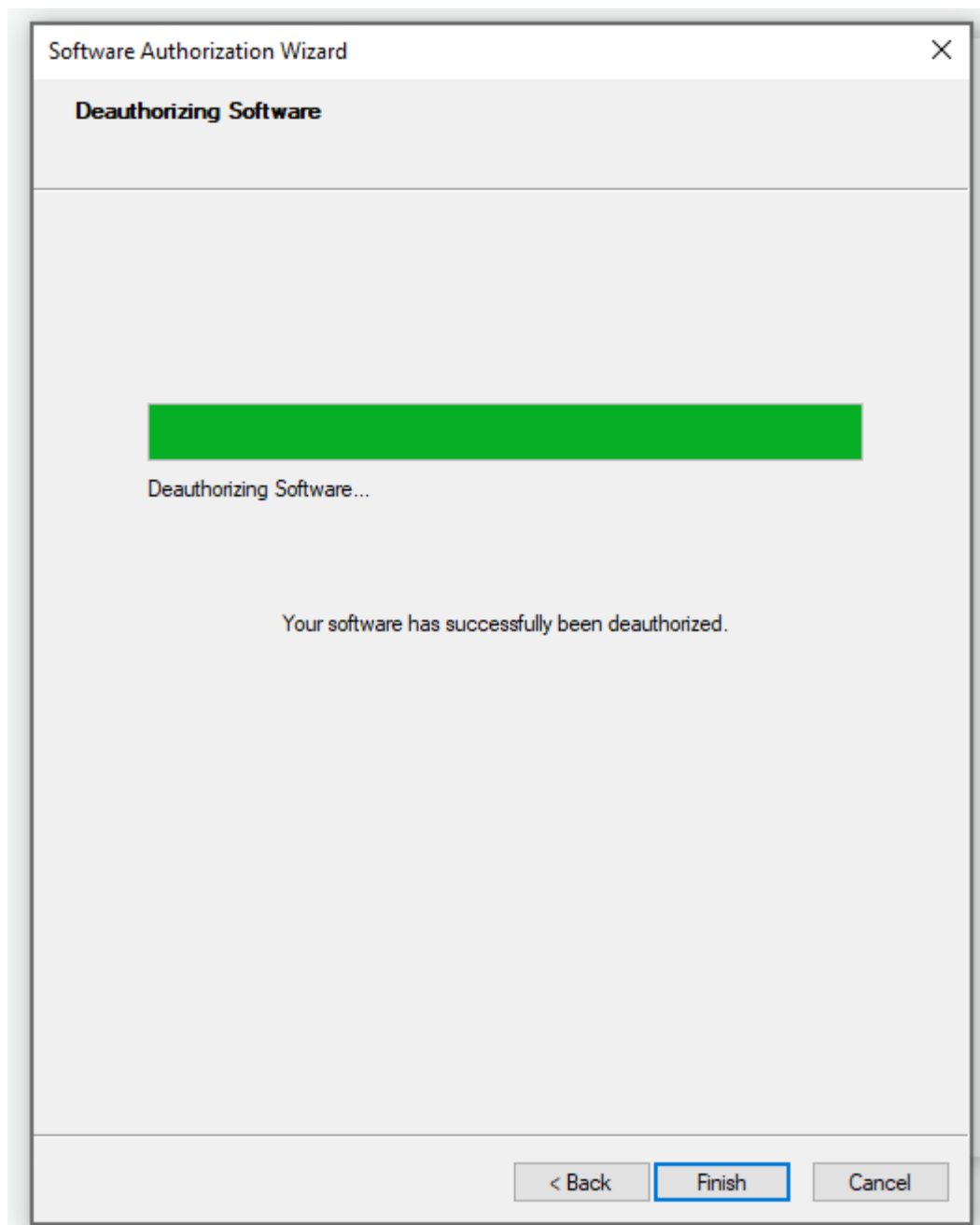
Please select which features you would like to deauthorize:

Feature	Version	Expires
<input checked="" type="checkbox"/> Desktop Standard	10.1-10.8	permanent
<input checked="" type="checkbox"/> Desktop Advanced	10.1-10.8	permanent
<input type="checkbox"/> ArcGIS Pro Advanced	1.2-3.1	permanent
<input type="checkbox"/> 3D Analyst Pro	1.2-3.1	permanent
<input type="checkbox"/> Data Reviewer Pro	1.2-3.1	permanent
<input type="checkbox"/> Defense Pro	1.2-3.1	permanent

Select/Deselect All

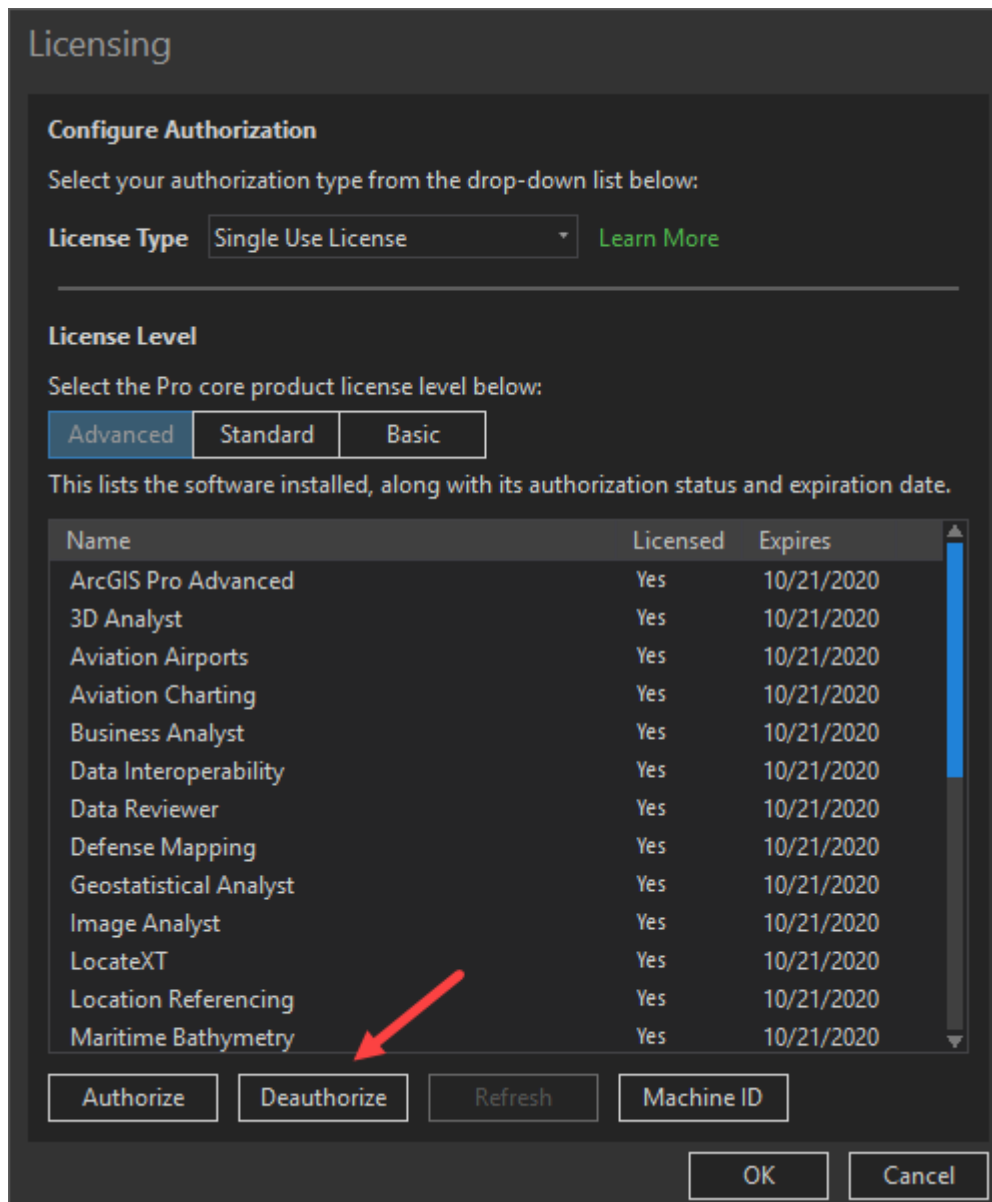
To complete the deauthorization process, please click Next.

< Back **Next >** Cancel



Offline Deauthorization:

1. Launch ArcGIS Pro.
2. Click **Settings** in the lower left corner of the ArcGIS Pro start page. On the **Settings** page, click **Licensing** then **Configure your licensing options**.
3. In the **Licensing** dialog, click **Deauthorize**.



4. A pop-up displays, reading **the successful deauthorization of single use feature will require ArcGIS Pro to shut down**. Click **OK**.
5. Under **Deauthorization Method**, select **Deauthorize at Esri's website or by email to receive your deauthorization file**.
6. Under **Deauthorization Options**, select the features to deauthorize.
7. Under **Email Deauthorization**, click **Save** to save the deauthorize.txt file used to complete the process. Click **Finish** after the file has been saved.
8. Obtain the deauthorization RESPS file using one of two methods.

- To send the deauthorization file via email, send an email to authorize@esri.com, with the file as an attachment, and save the RESPS file that is emailed back and move it to the original machine.
 - To upload the deauthorization file to my.esri.com:
 - a. Log into my.esri.com and under **My Organizations** select **Licensing**, and **Additional Licensing Forms**.
 - b. Click **Secure Site Operations** and click **Browse** to select the deauthorization file.
 - c. Click **Upload**.
 - d. Save the resulting RESPS file and move it to the original machine.
9. Repeat Steps 2 and 3 to open the Software Authorization Wizard. Select **I have received a deauthorization file from Esri and am now ready to finish the deauthorization process**.
- a. Click **Browse** and select the RESPS file created in the last step.
 - b. Click **Next** to complete the deauthorization process. The licenses are now deauthorized.

Article ID:000024065

Software: ArcGIS Pro